

WAAS CH 82432 W18A	APP CRS 176°	Rwy Idg TDZE Apt Elev	5000 1999 1999
--	------------------------	-----------------------------	---

RNAV (GPS) RWY 18

ROOKS COUNTY RGNL (RCP)

NA Baro-VNAV NA. Use Hill City altimeter setting; when not received, use Hays altimeter setting. Circling NA west of Rwy 18-36. DME/DME RNP-0.3 NA.

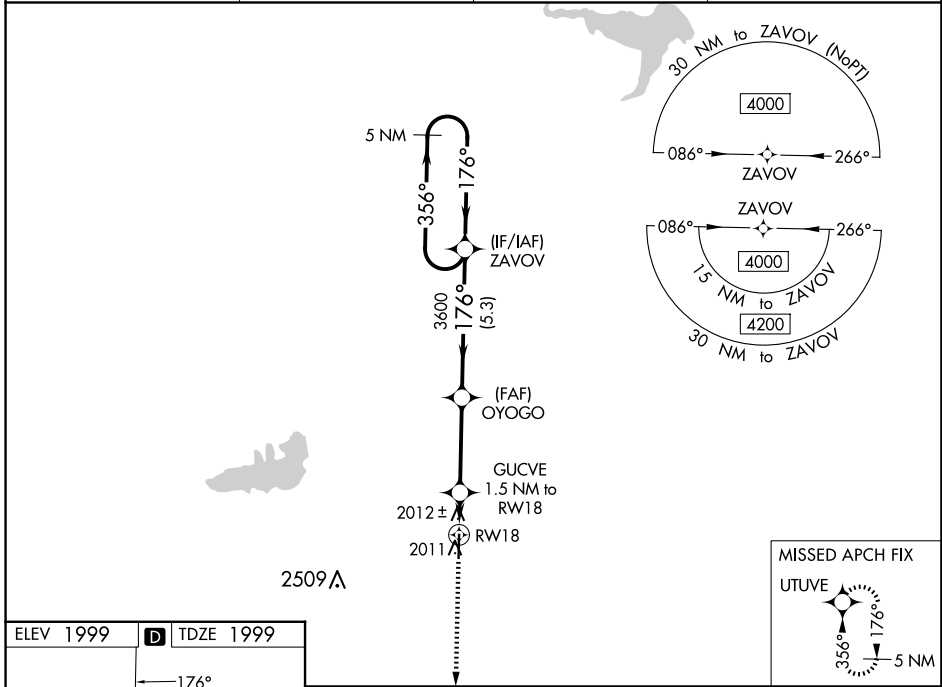
MISSED APPROACH: Climb to 6000 direct UTUVE and hold, continue climb-in-hold to 6000.

AWOS-AV
120.075

HLC ASOS
118.425

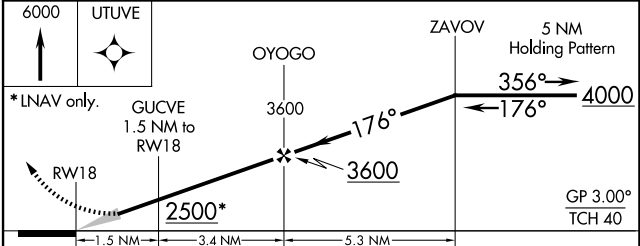
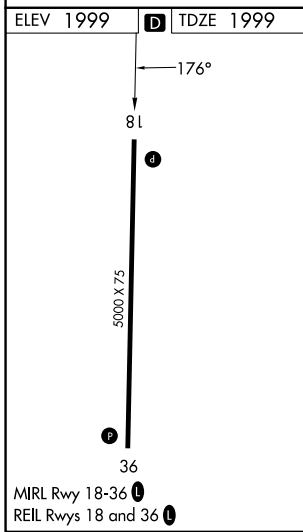
DENVER CENTER
132.7 226.675

CTAF
122.9



NC-2, 17 APR 2025 to 15 MAY 2025

NC-2, 17 APR 2025 to 15 MAY 2025



CATEGORY	A	B	C	D
LPV DA	2290-1	291 (300-1)		NA
LNAV/VNAV DA	2340-1 $\frac{1}{8}$	341 (400-1 $\frac{1}{8}$)		NA
LNAV MDA	2360-1	361 (400-1)		NA
C CIRCLING	2460-1 461 (500-1)	2480-1 481 (500-1)	2500-1 $\frac{1}{2}$ 501 (600-1 $\frac{1}{2}$)	NA