

|  |                        |   |             |
|--|------------------------|---|-------------|
| WAAS<br>CH <b>58036</b><br><b>W12A</b> | APP CRS<br><b>115°</b> | Rwy Idg<br>TDZE <b>1650</b><br>Apt Elev <b>1650</b> | <b>3550</b> |
|--|------------------------|---|-------------|

# RNAV (GPS) RWY 12

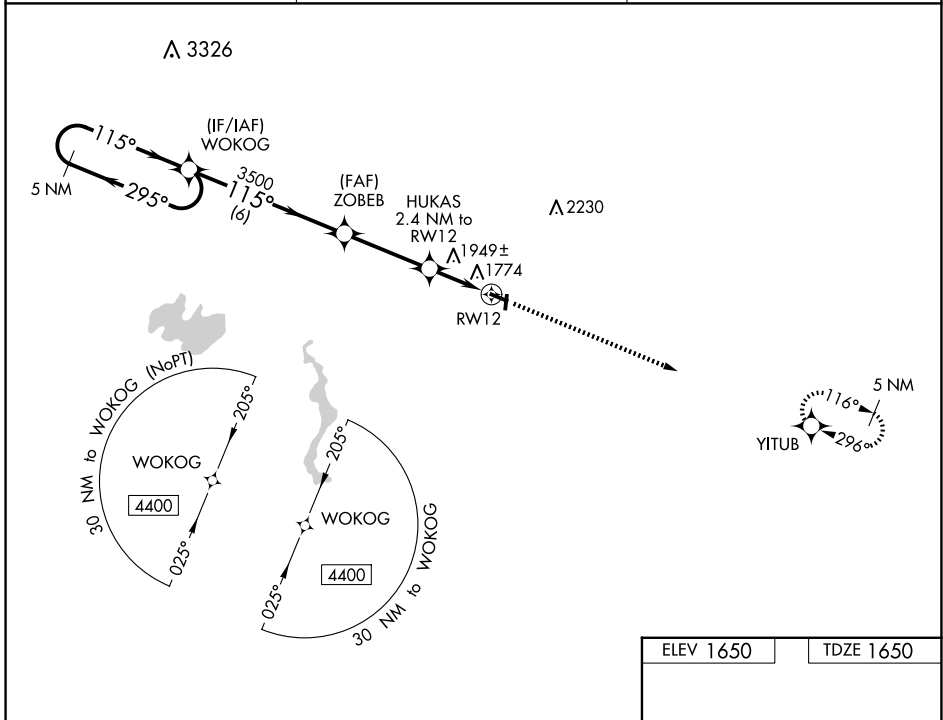
CRANDON/STEVE CONWAY MUNI (Y55)

RNP APCH - GPS

▼ Baro-VNAV NA. Use Rhineland altimeter setting, when not received, use Eagle River altimeter setting and increase LPV DA to 2063 feet; increase LNAV/VNAV DA to 2359 feet; increase all MDAs 20 feet. Rwy 12 helicopter visibility reduction below 3/4 SM NA. Circling to Rws 1, 19 NA.

▲ NA MISSED APPROACH: Climb to 4400 direct YITUB and hold.

|                            |   |                        |
|----------------------------|---|------------------------|
| RHI ASOS<br><b>126.825</b> | MINNEAPOLIS CENTER<br><b>133.65 281.5</b> | CTAF<br><b>122.9 0</b> |
|----------------------------|---|------------------------|

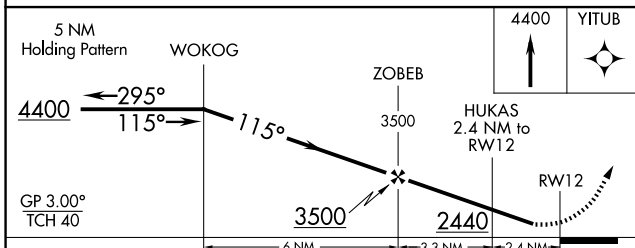


EC-3, 17 APR 2025 to 15 MAY 2025

EC-3, 17 APR 2025 to 15 MAY 2025

|           |           |
|-----------|-----------|
| ELEV 1650 | TDZE 1650 |
|-----------|-----------|

Detailed diagram of the final approach segment. It shows the 2.4 NM distance from HUKAS to RW12 at a 115° heading. The vertical profile includes a 0.4% climb and a -0.6% descent. A missed approach point is marked with a star at 30 feet. A 5 NM holding pattern is also shown for YITUB at 4400 feet.



| CATEGORY     | A                                  | B  | C  | D  |
|--------------|------------------------------------|--|--|----|
| LPV DA       | 2056-1 <sup>1</sup> / <sub>8</sub> | 406 (500-1 <sup>1</sup> / <sub>8</sub> ) |  | NA |
| LNAV/VNAV DA | 2352-2                             | 702 (800-2)                              |  | NA |
| LNAV MDA     | 2260-1                             | 610 (700-1)                              | 2260-1 <sup>3</sup> / <sub>4</sub><br>610 (700-1 <sup>3</sup> / <sub>4</sub> ) | NA |
| CIRCLING     | 2300-1<br>650 (700-1)              | 2340-1<br>690 (700-1)                    | 2360-2<br>710 (800-2)  | NA |