

|  |                        |   |
|--|------------------------|---|
| WAAS<br>CH <b>42537</b><br><b>W29A</b> | APP CRS<br><b>292°</b> | Rwy Idg <b>2756</b><br>TDZE <b>721</b><br>Apt Elev <b>721</b> |
|--|------------------------|---|

# RNAV (GPS) RWY 29

CYNTHIANA-HARRISON COUNTY (Ø18)

RNP APCH.

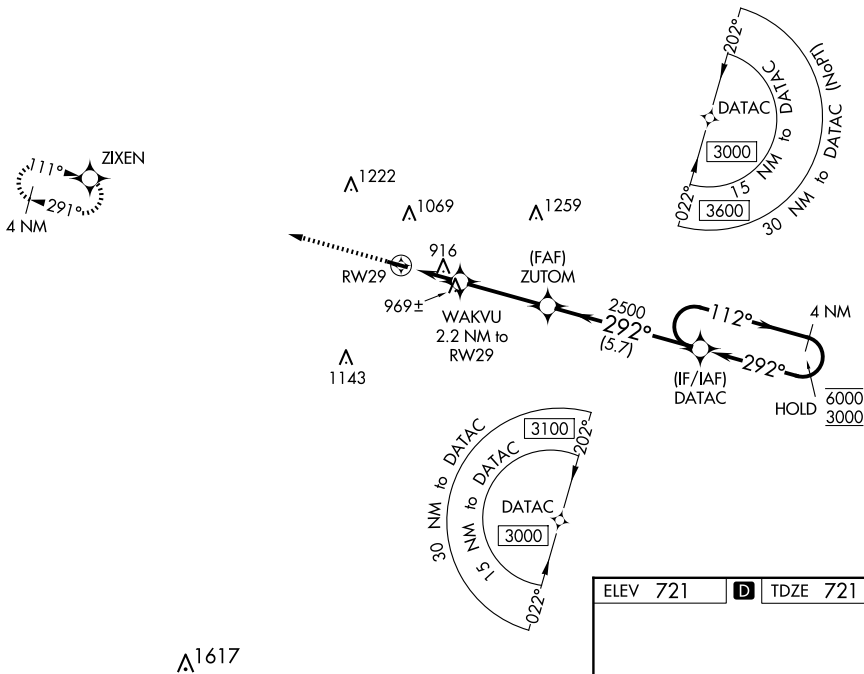
- ▼ Procedure NA at night. Rwy 29 helicopter visibility reduction below 1 SM NA. Use Georgetown altimeter setting; when not received, use Lexington altimeter setting and increase all MDA 40 feet.
- ▲ NA

MISSED APPROACH: Climb to 3000 direct ZIXEN and hold.

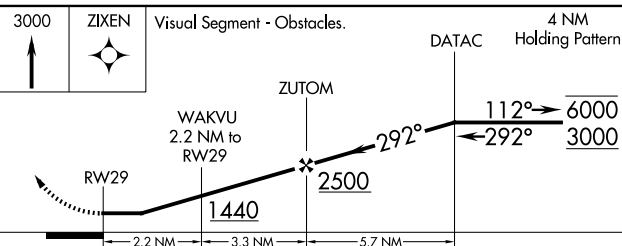
27K AWOS-3  
**119.975**

LEXINGTON APP CON  
**120.15 259.3** (040°-220°)  
**120.75 298.9** (221°-039°)

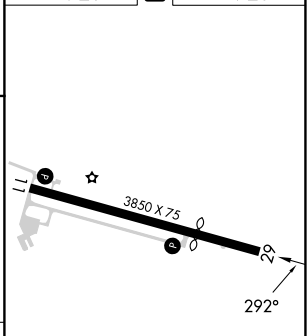
UNICOM  
**122.8** (CTAF) **Ø**



ELEV 721 **D** TDZE 721



| CATEGORY          | A                     | B                       | C | D  |
|-------------------|-----------------------|-------------------------|---|----|
| LP MDA            | 1240-1                | 519 (600-1)             |   | NA |
| LNAV MDA          | 1280-1                | 559 (600-1)             |   | NA |
| <b>C</b> CIRCLING | 1340-1<br>619 (700-1) | 1560-1¼<br>839 (900-1¼) |   | NA |



MIRL Rwy 11-29 **Ø**  
REIL Rvws 11 and 29 **Ø**

SE-1, 17 APR 2025 to 15 MAY 2025

SE-1, 17 APR 2025 to 15 MAY 2025