

WIGGINS, MISSISSIPPI

AL-11572 (FAA)

22251

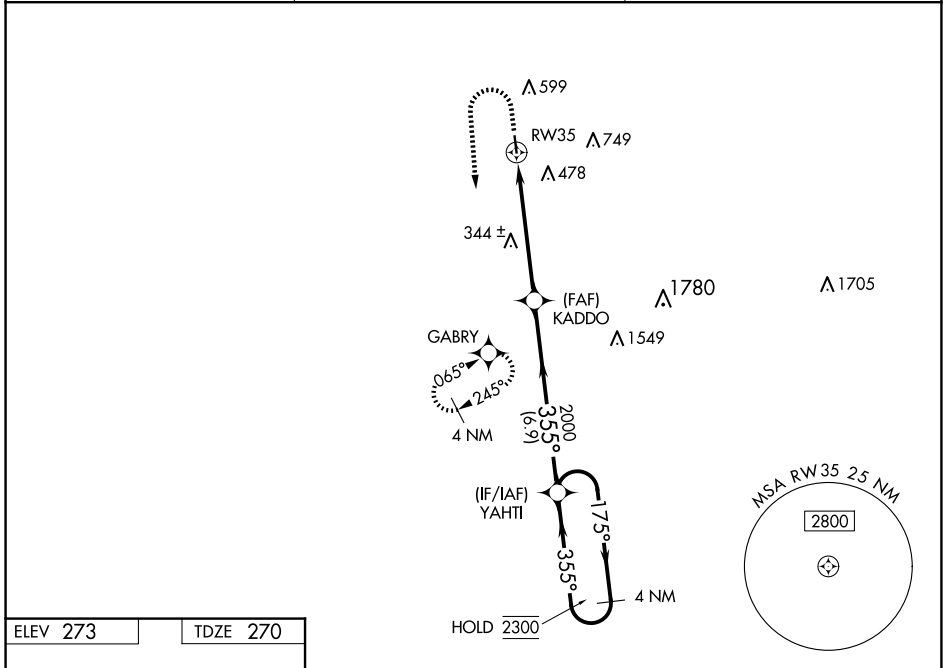
WAAS CH 86643 W35A	APP CRS 355°	Rwy Idg TDZE Apt Elev	3500 270 273
--	------------------------	-----------------------------	---

RNAV (GPS) RWY 35

DEAN GRIFFIN MEML (M24)

RNP APCH - GPS.	MISSED APPROACH: Climb to 800 then climbing left turn to 3000 direct GABRY and hold, continue climb-in-hold to 3000.
<p>▼ Rwy 35 helicopter visibility reduction below 3/4 SM NA. Baro-VNAV NA.</p> <p>▲ NA Use Hattiesburg Bobby L Chain Muni altimeter setting.</p>	

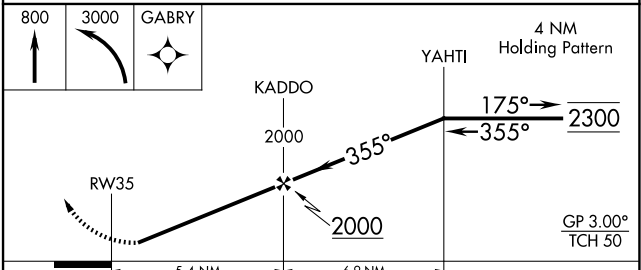
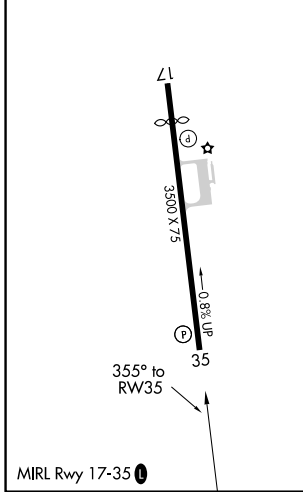
HBG ASOS 135.425	GULFPORT APP CON * 127.5 254.25	UNICOM 122.8 (CTAF) 0
----------------------------	---	---------------------------------



SC-4, 17 APR 2025 to 15 MAY 2025

SC-4, 17 APR 2025 to 15 MAY 2025

ELEV 273	TDZE 270
----------	----------



CATEGORY	A	B	C	D
LPV DA	597-1	327 (400-1)		NA
LNAV/VNAV DA	597-1	327 (400-1)		NA
LNAV MDA	680-1	410 (500-1)		NA
C CIRCLING	760-1 487 (500-1)	1040-1 767 (800-1)		NA

WIGGINS, MISSISSIPPI
Orig 08SEP22

30°51'N-89°10'W

RNAV (GPS) RWY 35

DEAN GRIFFIN MEML (M24)