

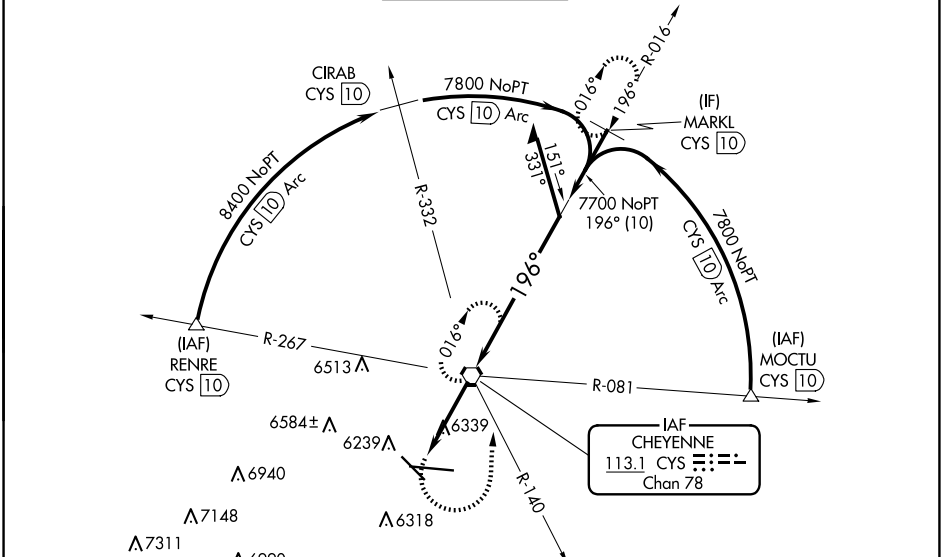
VORTAC CYS 113.1 Chan 78	APP CRS 196°	Rwy Idg TDZE Apt Elev 6160	N/A N/A N/A
--	------------------------	--------------------------------------	-------------------

VOR or TACAN-A

CHEYENNE RGNL/JERRY OLSON FLD (CYS)

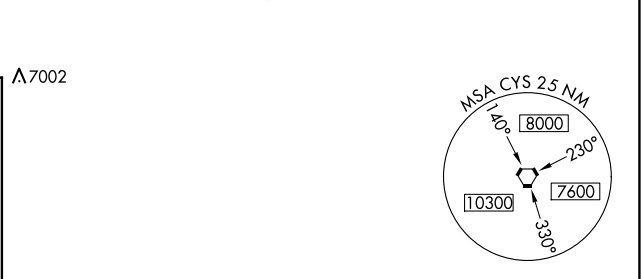
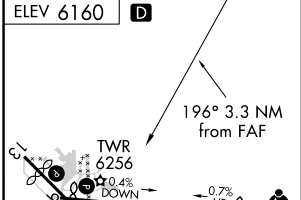
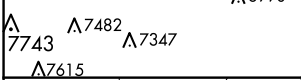
ASR/PAR	MISSED APPROACH: Climbing left turn to 8000 on heading 350° and on CYS VORTAC R-140 to CYS VORTAC and hold, continue climb-in-hold to 8000 (TACAN aircraft continue on CYS VORTAC R-016 to MARKL/10 DME and hold north, right turn, 196° inbound.)
----------------	--

ATIS 134.425 278.3	CHEYENNE APP CON * 124.55 263.075	CHEYENNE TOWER * 118.7 (CTAF) 0257.8	GND CON 121.9 254.275	UNICOM 122.95
------------------------------	---	---	---------------------------------	-------------------------



NW-1, 15 MAY 2025 to 12 JUN 2025

NW-1, 15 MAY 2025 to 12 JUN 2025



8000 hdg 350°	CYS R-140	CYS VORTAC	Remain within 10 NM

FAF to MAP 3.3 NM					CATEGORY	A	B	C	D	
Knots	60	90	120	150	180	CIRCLING	6640-1	480 (500-1)	6900-2 740 (800-2)	6940-2½ 780 (800-2½)
Min:Sec	3:18	2:12	1:39	1:19	1:06					