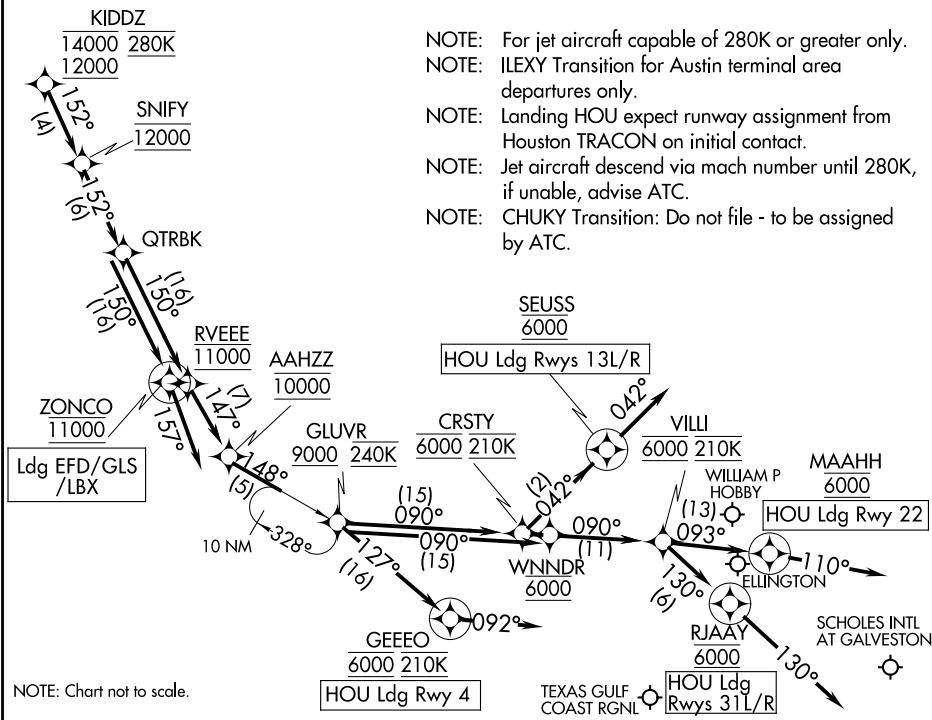


HOUSTON, TEXAS

RNAV 1 - DME/DME/IRU or GPS.
RADAR required.



HOU: From KIDDZ on track 152° to cross SNIFY at 12000, then on track 152° to QTRBK, then on track 150° to cross RVEEE at 11000, then on track 147° to cross AAHHZ at 10000, then on track 148° to cross GLUVR at or above 9000 and at 240K.

LANDING HOU RUNWAY 4: From GLUVR on track 127° to cross GEEEO at 6000 and at 210K, then on track 092°. Expect ILS or LOC Rwy 04 approach or RADAR vectors to final approach course.

LANDING HOU RUNWAYS 13L/R: From GLUVR on track 090° to cross CRSTY at 6000 and at 210K, then on track 042° to cross SEUSS at 6000, then on track 042°. Expect RADAR vectors to final approach course.

LANDING HOU RUNWAY 22: From GLUVR on track 090° to cross WNNDR at 6000, then on track 090° to cross VILLI at 6000 and at 210K, then on track 093° to cross MAAHH at 6000, then on track 110°. Expect RADAR vectors to final approach course.

LANDING HOU RUNWAYS 31L/R: From GLUVR on track 090° to cross WNNDR at 6000, then on track 090° to cross VILLI at 6000 and at 210K, then on track 130° to RJAY at 6000, then on track 130°. Expect RADAR vectors to final approach course.

LANDING GLS/LBX/EFD: From KIDDZ on track 152° to cross SNIFY at 12000, then on track 152° to QTRBK, then on track 150° to cross ZONCO at 11000, then on track 157°. Expect RADAR vectors to final approach course.