

KEY WEST, FLORIDA

HI-TACAN W RWY 8

VORTAC EYW 113.5 Chan 82	APCH CRS 098°	Rwy Idg 10,001 TDZE 4 Arprt Elev 6
--	-------------------------	---

AL-214 [USN]

KEY WEST NAS (BOCA CHICA FLD) (KNQX)

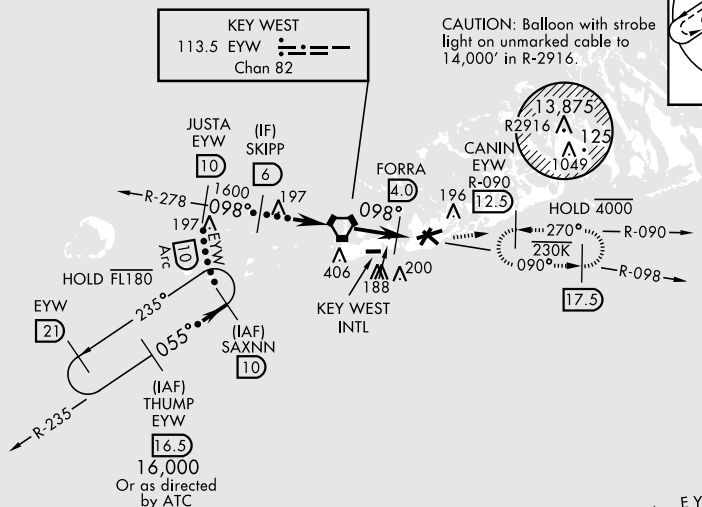
RADAR required



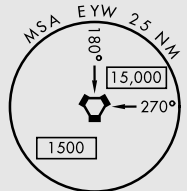
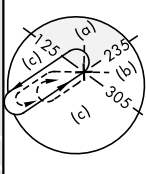
MISSED APPROACH: Climbing left turn to 1600 intercept EYW VORTAC R-090 to CANIN and hold.

ATIS ★ 307.025	NAVY KEY WEST APP CON 124.025 313.7	NAVY KEY WEST TOWER ★ 118.575 340.25	GND CON 121.7 336.45	CLNC DEL 121.2 357.4	ASR/PAR
--------------------------	---	--	--------------------------------	--------------------------------	---------

CAUTION: Excessive descent gradients multiple segments



CAUTION: Balloon with strobe light on unmarked cable to 14,000' in R-2916.



EMERG SAFE ALT 100 NM 15,000

THUMP 16.5	SAXNN R-235 10	JUSTA R-278 10	SKIPP 6	VORTAC 1600	FORRA 4.0	ECIPA 5.3	CANIN EYW R-090 12.5	ELEV 6	TDZE 4
† Or as directed by ATC †† FORRA to MAP 1600 EYW R-090									
†† 3.11° TCH 44 †16,000 †10,000 †5600 Arc 10 055°		098°		1600 560 4.0 NM 1.5 NM					
CATEGORY	C		D		E				
S-8	440-1¼		436 (500-1¼)						
CIRCLING	500-1½ 494 (500-1½)		560-2		554 (600-2)		HIRL all rwys		

KEY WEST, FLORIDA

24°34'N-81°41'W

KEY WEST NAS (BOCA CHICA FLD) (KNQX)

Amdt 4 23FEB23

HI-TACAN W RWY 8

SE-3, 15 MAY 2025 to 12 JUN 2025

SE-3, 15 MAY 2025 to 12 JUN 2025