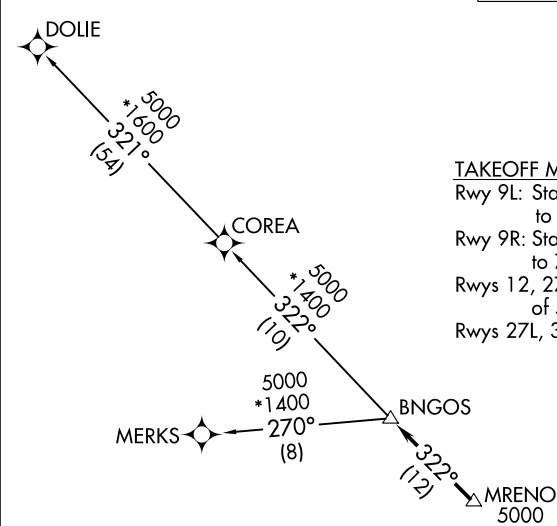


RNAV-1 DME/DME/IRU or GPS.	TOP ALTITUDE: ASSIGNED BY ATC	MIAMI DEP CON
RADAR required.		119.45 290.325
		ATIS
		125.9
		CLNC DEL
		119.2
		GND CON
		120.025
		OPA LOCKA TOWER*
		134.675 (CTAF)



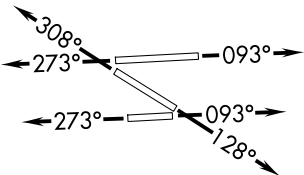
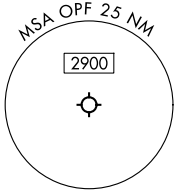
TAKEOFF MINIMUMS

Rwy 9L: Standard with minimum climb of 500'/NM to 1000.

Rwy 9R: Standard with minimum climb of 500'/NM to 700.

Rwys 12, 27R: Standard with minimum climb of 500'/NM to 600.

Rwys 27L, 30: Standard.



NOTE: Jet aircraft only.

NOTE: Accelerate to 250K until leaving 10000', if unable, advise ATC.

NOTE: MERKS Transition ATC assigned only except aircraft landing: MKY, RSW, APF, PGD and FMY.

NOTE: Chart not to scale.

DEPARTURE ROUTE DESCRIPTION
TAKEOFF RUNWAYS 9L/R: Climb on heading 093° or as assigned by ATC for RADAR vectors to cross MRENO at or above 5000, thence. . .
TAKEOFF RUNWAY 12: Climb on heading 128° or as assigned by ATC for RADAR vectors to cross MRENO at or above 5000, thence. . .
TAKEOFF RUNWAYS 27L/R: Climb on heading 273° or as assigned by ATC for RADAR vectors to cross MRENO at or above 5000, thence. . .
TAKEOFF RUNWAY 30: Climb on heading 308° or as assigned by ATC for RADAR vectors to cross MRENO at or above 5000, thence. . .
. . .on track 322° to BNGOS, then on assigned transition, maintain ATC assigned altitude, expect filed altitude within 10 minutes after departure.
COREA TRANSITION (BNGOS4.COREA)
DOLIE TRANSITION (BNGOS4.DOLIE)
MERKS TRANSITION (BNGOS4.MERKS)