

## YODUH ONE DEPARTURE (RNAV)

SAN ANTONIO, TEXAS

RNAV 1 - DME/DME IRU or GPS.

**TOP ALTITUDE:**  
5000

RADAR required.

SAN ANTONIO DEP CON

125.1 307.0 (Rwy 31L/R)

125.7 290.225 (Rwy 22)

127.1 269.1 (Rwys 4, 13L/R)

D-ATIS

118.9

CLNC DEL

126.7

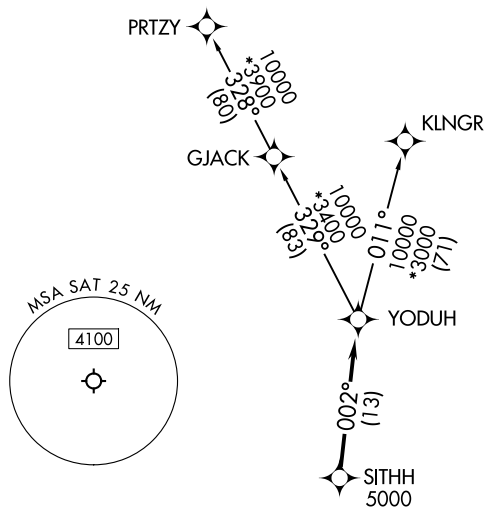
CPDLC

GND CON

121.9 348.6

SAN ANTONIO TOWER

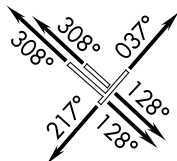
119.8 257.8



## TAKEOFF MINIMUMS

Rwys 4, 13L/R, 22, 31L/R: Standard.

NOTE: Aircraft destined for airports north/northeast of DFW terminal area must file the KLNGR Transition.



NOTE: Chart not to scale.



## DEPARTURE ROUTE DESCRIPTION

TAKEOFF RUNWAY 4: Climb on heading 037° or as assigned by ATC, for vectors to SITHH, thence . . .

TAKEOFF RUNWAYS 13L/R: Climb on heading 128° or as assigned by ATC, for vectors to SITHH, thence . . .

**TAKEOFF RUNWAY 22:** Climb on heading 217° or as assigned by ATC, for vectors to SITHH, thence . . .

TAKEOFF RUNWAYS 31L/R: Climb on heading 308° or as assigned by ATC, for vectors to SITHH, thence . . .

... on track 002° to YODUH, then on Transition. Maintain 5000.

KLN GR TRANSITION (YODUH1.KLN GR)

---

PRTZY TRANSITION (YODUH1.PRTZY)

## YODUH ONE DEPARTURE (RNAV)

(YODUH1.YODUH) 25JAN24

SAN ANTONIO, TEXAS

SAN ANTONIO INTL (SAT)