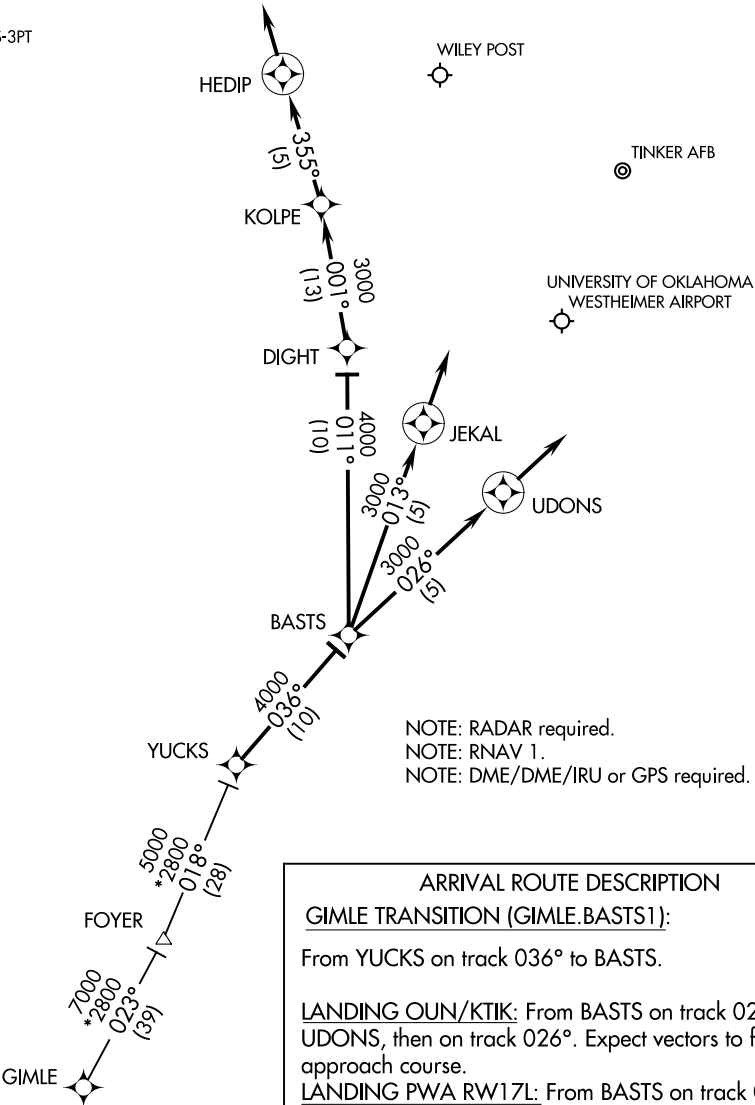


OKE CITY APP CON
124.6 266.8
KTIK ATIS ★
270.1
OUN AWOS-3PT
119.55
PWA ATIS
128.725



NOTE: RADAR required.
NOTE: RNAV 1.
NOTE: DME/DME/IRU or GPS required.

ARRIVAL ROUTE DESCRIPTION

GIMLE TRANSITION (GIMLE.BASTS1):

From YUCKS on track 036° to BASTS.

LANDING OUN/KTIK: From BASTS on track 026° to UDONS, then on track 026°. Expect vectors to final approach course.

LANDING PWA RW17L: From BASTS on track 011° to DIGHT, then on track 001° to KOLPE, then on track 355° to HEDIP, then on track 355°. Expect vectors to final approach course.

LANDING PWA RW35R: From BASTS on track 013° to JEKAL, then on track 013°. Expect vectors to final approach course.

NOTE: Chart not to scale.

SC-1, 15 MAY 2025 to 12 JUN 2025

SC-1, 15 MAY 2025 to 12 JUN 2025