

# STRYA EIGHT DEPARTURE (RNAV)

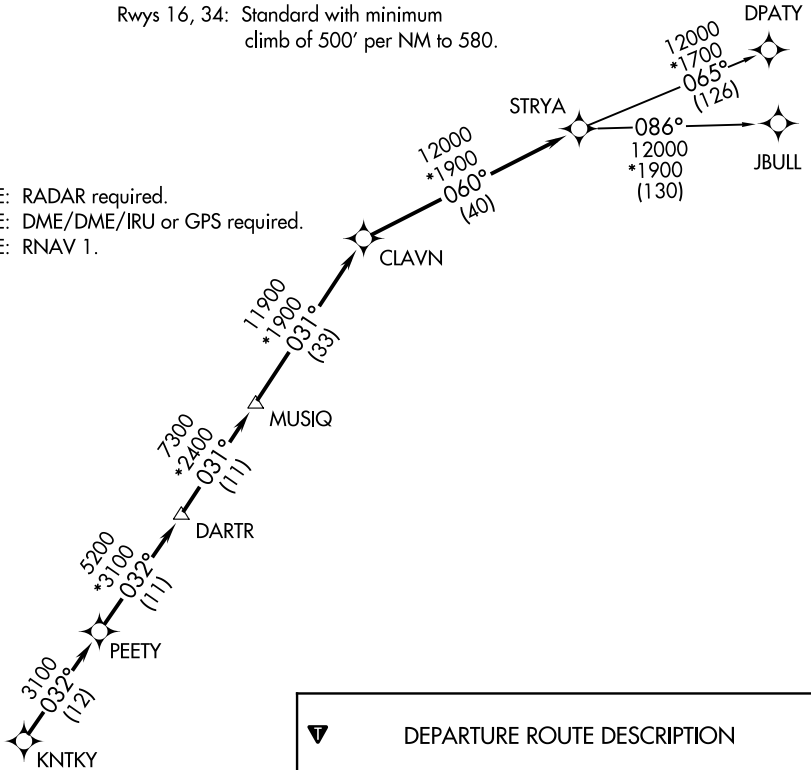
**TOP ALTITUDE: ASSIGNED BY ATC**

CTAF  
122.9  
HOUSTON DEP CON  
119.7 281.4

### TAKEOFF MINIMUMS

Rwys 16, 34: Standard with minimum climb of 500' per NM to 580.

- NOTE: RADAR required.
- NOTE: DME/DME/IRU or GPS required.
- NOTE: RNAV 1.



**▼ DEPARTURE ROUTE DESCRIPTION**

**TAKEOFF RUNWAY 16:** Climb on heading 161° to 1700 for RADAR vectors to KNTKY, then...

**TAKEOFF RUNWAY 34:** Climb on heading 341° to 1000 for RADAR vectors to KNTKY, then...

...on track 032° to PEETY, then on track 032° to DARTR, then on track 031° to MUSIQ, then on track 031° to CLAVN, then on track 060° to STRYA, then on (transition). Maintain ATC assigned altitude. Expect filed altitude 10 minutes after departure.

**DPATY TRANSITION (STRYA8.DPATY)**

**JBULL TRANSITION (STRYA8.JBULL)**

NOTE: Chart not to scale.

SC-5, 15 MAY 2025 to 12 JUN 2025

SC-5, 15 MAY 2025 to 12 JUN 2025

# STRYA EIGHT DEPARTURE (RNAV)

(STRYA8.STRYA) 07OCT21