

WAAS CH 65941 W05A	APP CRS 045°	Rwy Idg TDZE 927 Apt Elev 927	5287 927 927
--	------------------------	---	---

RNAV (GPS) RWY 5

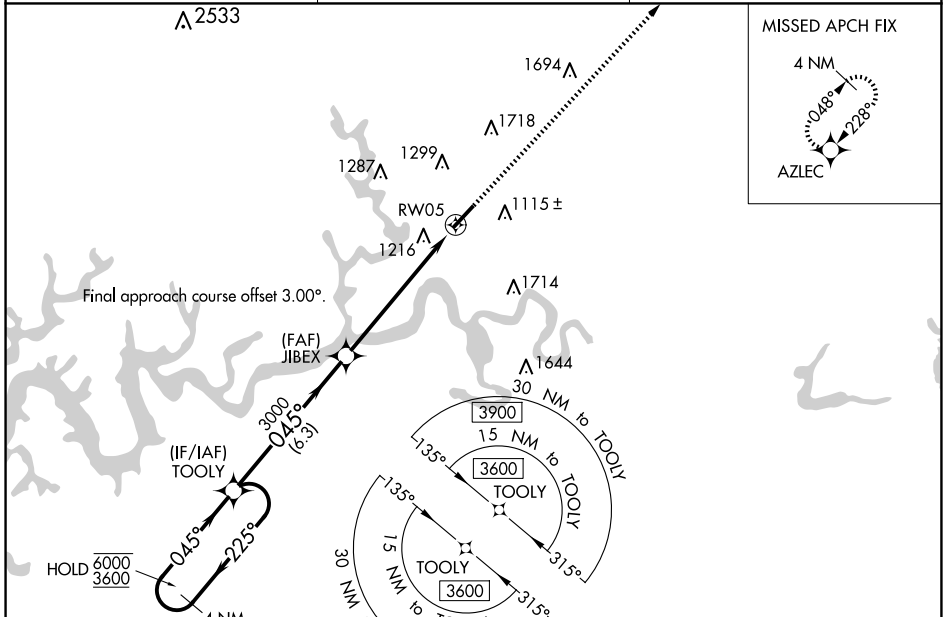
LAKE CUMBERLAND RGNL (SME)

RNP APCH - GPS

▼ Rwy 5 helicopter visibility reduction below 3/4 SM NA. For uncompensated Baro-VNAV systems, LNAV/VNAV NA below -16°C or above 54°C. Baro-VNAV and VDP NA when using Monticello altimeter setting. When local altimeter setting not received, use Monticello altimeter setting and increase LPV DA to 1221 feet, increase LNAV/VNAV DA to 1591 feet. Increase LPV and LNAV/VNAV visibilities all Cats 1/8 SM. Increase all MDAs 60 feet, increase LNAV Cat C and D visibility 1/8 SM, and Circling Cat B 1/4 SM.

MISSED APPROACH:
Climb to 3600 direct
AZLEC and hold.

AWOS-3 120.05	INDIANAPOLIS CENTER 124.625 371.925	UNICOM 122.8 (CTAF) 0
-------------------------	---	--

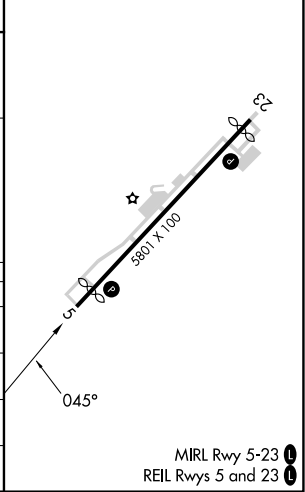
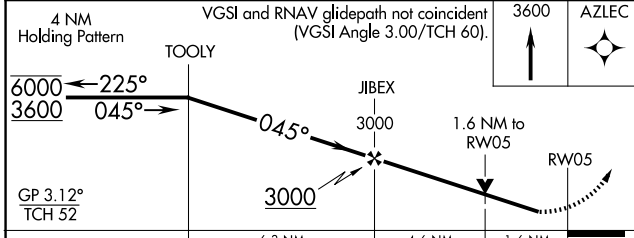


SE-1, 15 MAY 2025 to 12 JUN 2025

SE-1, 15 MAY 2025 to 12 JUN 2025



ELEV 927	D TDZE 927
----------	-------------------



CATEGORY	A	B	C	D
LPV DA		1177-3/4	250 (300-3/4)	
LNAV/VNAV DA		1547-13/4	620 (700-13/4)	
LNAV MDA	1480-1	553 (600-1)	1480-15/8	553 (600-15/8)
CIRCLING	1580-1 653 (700-1)	1700-1 773 (800-1)	2100-3	1173 (1200-3)