

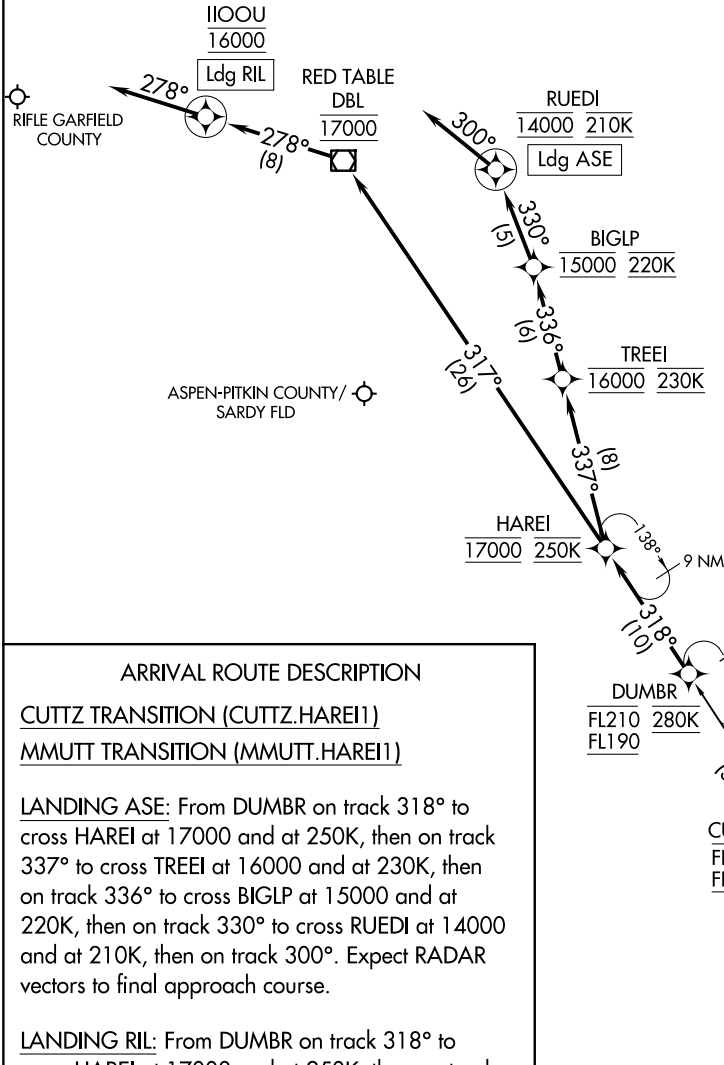
(DUMBR.HAREI1) 25107  
HAREI ONE ARRIVAL

AL-5889 (FAA)

ASPEN, COLORADO

RNAV 1 - DME/DME/IRU or GPS.  
RADAR required.

DENVER CENTER  
119.85 363.15  
ASPEN APP CON ★  
123.8 288.3  
ATIS  
120.4  
ASPEN TOWER ★  
118.85 (CTAF) 288.3



ARRIVAL ROUTE DESCRIPTION

CUTTZ TRANSITION (CUTTZ.HAREI1)  
MMUTT TRANSITION (MMUTT.HAREI1)

**LANDING ASE:** From DUMBR on track 318° to cross HAREI at 17000 and at 250K, then on track 337° to cross TREEI at 16000 and at 230K, then on track 336° to cross BIGLP at 15000 and at 220K, then on track 330° to cross RUEDI at 14000 and at 210K, then on track 300°. Expect RADAR vectors to final approach course.

**LANDING RIL:** From DUMBR on track 318° to cross HAREI at 17000 and at 250K, then on track 317° to cross DBL VOR/DME at 17000, then on track 278° to cross IIOOU at 16000, then on track 278°. Expect RADAR vectors to final approach course.

NOTE: Chart not to scale.

HAREI ONE ARRIVAL  
(DUMBR.HAREI1) 17APR25

ASPEN, COLORADO

SW-1, 15 MAY 2025 to 12 JUN 2025

SW-1, 15 MAY 2025 to 12 JUN 2025