

(NANDR3.NANDR) 25107

AL-5936 (FAA)

LANCASTER RGNL (LNC)

NANDR THREE DEPARTURE (RNAV)

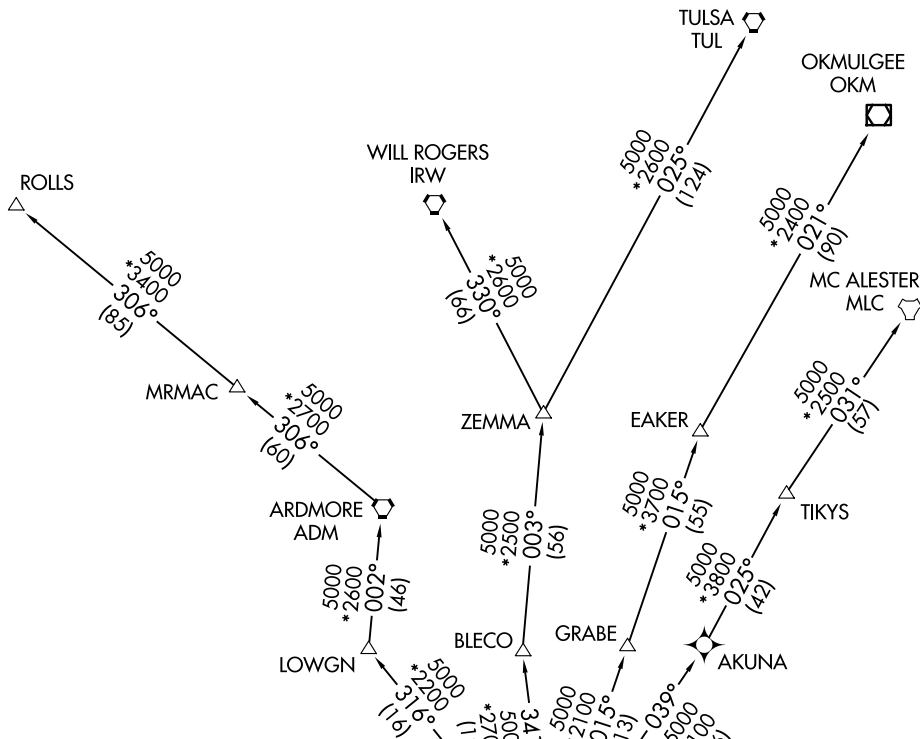
LANCASTER, TEXAS

LONE STAR DEP CON
125.2 343.65

RNAV 1 - DME/DME/IRU or GPS.

RADAR required.

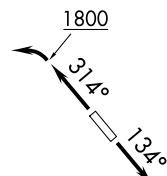
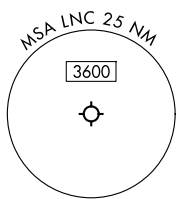
**TOP ALTITUDE:
ASSIGNED BY ATC**



TAKEOFF MINIMUMS

Rwy 13: Standard.

Rwy 31: 300-1¼ or standard with minimum climb of 205'/NM to 800, or alternatively, with standard takeoff minimums and a normal 200'/NM climb gradient, takeoff must occur no later than 1 200' prior to DER.



NOTE: EAKER Transition: For TUL terminal arrivals only.
NOTE: TULSA Transition: For all aircraft overflying TUL VORTAC.
NOTE: Aircraft arriving to the Oklahoma City terminal area, file and expect the ZEMMA enroute transition.

NOTE: Chart not to scale.

(CONTINUED ON FOLLOWING PAGE)

NANDR THREE DEPARTURE (RNAV)

(NANDR3.NANDR) 17APR25

LANCASTER, TEXAS

LANCASTER RGNL (LNC)

SC-2, 15 MAY 2025 to 12 JUN 2025

SC-2, 15 MAY 2025 to 12 JUN 2025