

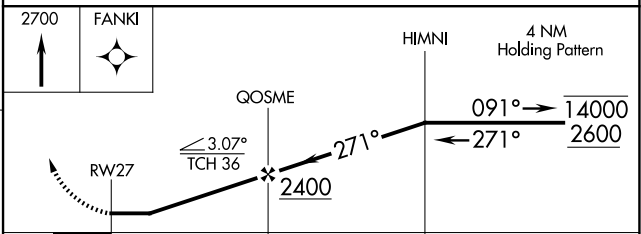
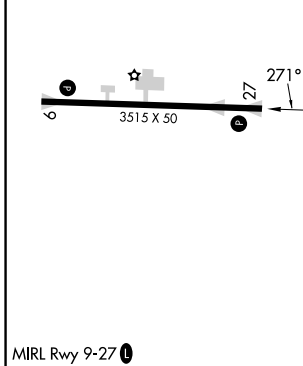
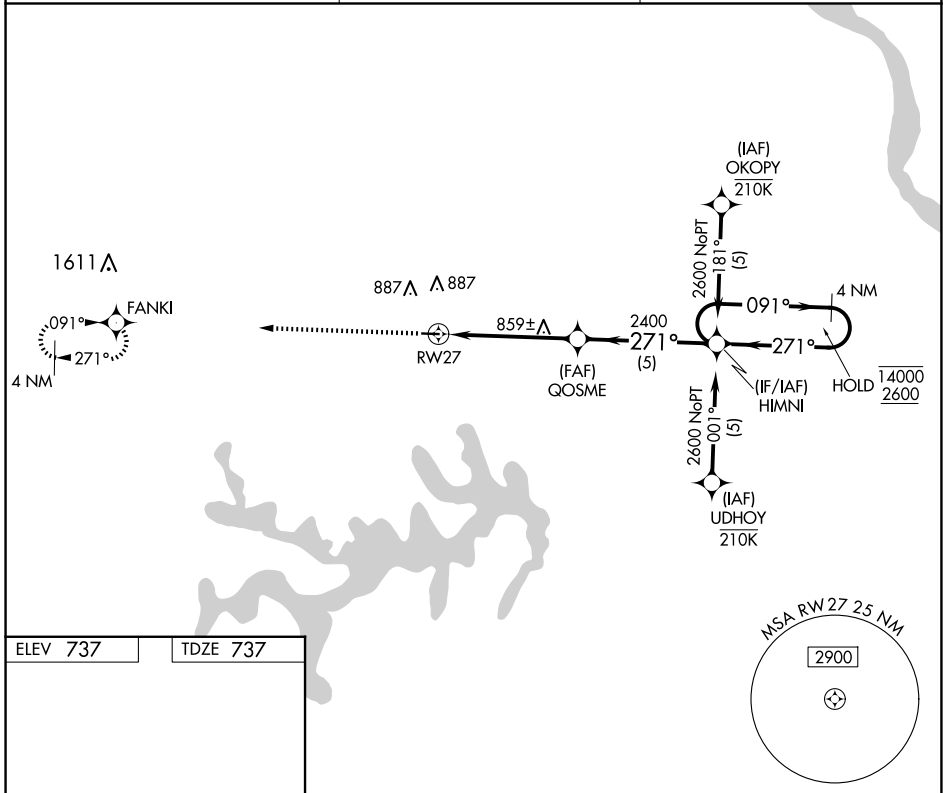
APP CRS	Rwy Idg	<b>3515</b>
<b>271°</b>	TDZE	<b>737</b>
	Apt Elev	<b>737</b>

# RNAV (GPS) RWY 27

CPT BEN SMITH AIRFIELD/MONROE CITY (K52)

RNP APCH - GPS.	MISSED APPROACH: Climb to 2700 direct FANKI and hold.
<p><b>▼</b> Procedure NA at night. Rwy 27 helicopter visibility reduction below 1 SM NA. Use Quincy, IL altimeter setting.</p>	

UIN ASOS <b>121.425</b>	KANSAS CITY CENTER <b>126.225 317.775</b>	UNICOM <b>122.8 (CTAF) 0</b>
----------------------------	--	---------------------------------



CATEGORY	A	B	C	D
LNAV MDA	1240-1	503 (600-1)	1240-1 <sup>5</sup> / <sub>8</sub> 503 (600-1 <sup>5</sup> / <sub>8</sub> )	NA
<b>C</b> CIRCLING	1380-1	643 (700-1)	1380-1 <sup>3</sup> / <sub>4</sub> 643 (700-1 <sup>3</sup> / <sub>4</sub> )	NA