

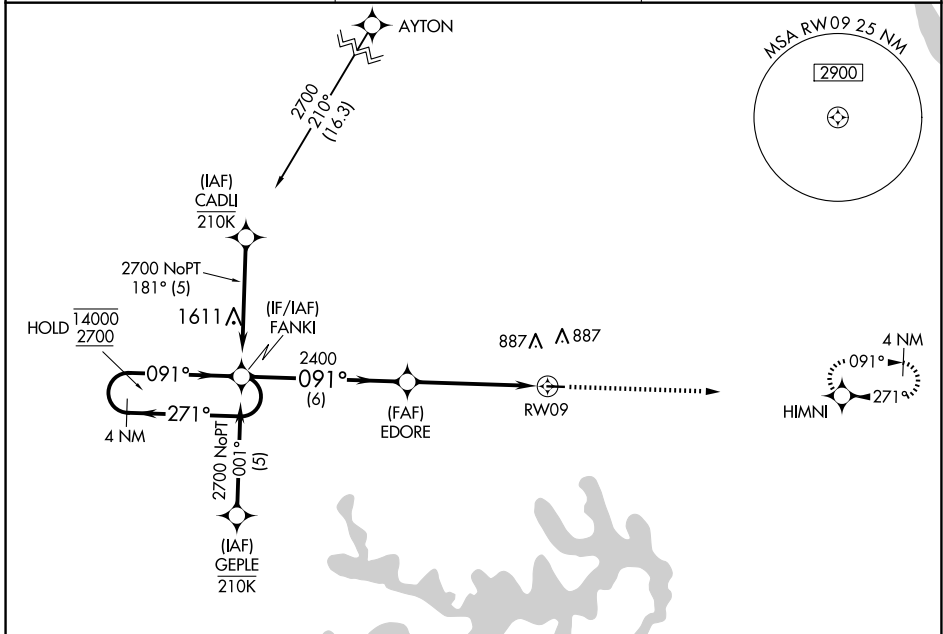
APP CRS	Rwy Idg	<b>3515</b>
<b>091°</b>	TDZE	<b>737</b>
	Apt Elev	<b>737</b>

# RNAV (GPS) RWY 9

CPT BEN SMITH AIRFIELD/MONROE CITY (K52)

RNP APCH - GPS.	MISSED APPROACH: Climb to 2600 direct HIMNI and hold.
<p><b>V</b> Procedure NA at night. Rwy 9 helicopter visibility reduction below 1 SM NA. Use Quincy, IL altimeter setting.</p> <p><b>Δ</b> NA</p>	

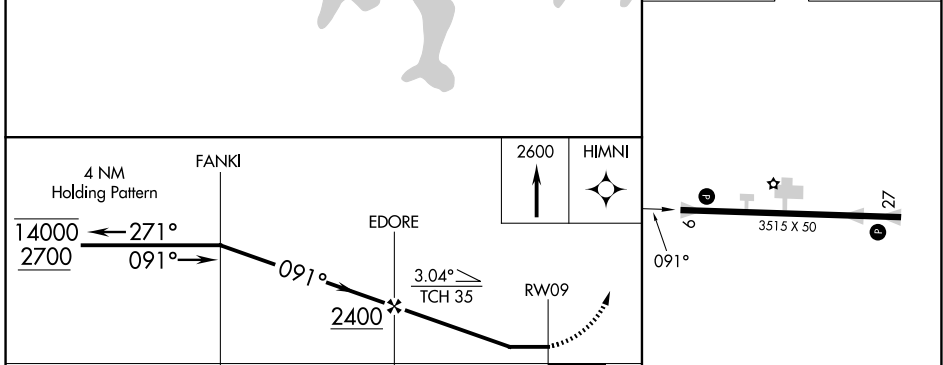
UIN ASOS <b>121.425</b>	KANSAS CITY CENTER <b>126.225 317.775</b>	UNICOM <b>122.8 (CTAF)</b>
----------------------------	--	-------------------------------



NC-3, 15 MAY 2025 to 12 JUN 2025

NC-3, 15 MAY 2025 to 12 JUN 2025

ELEV 737	TDZE 737
----------	----------



CATEGORY	A	B	C	D
LNAV MDA	1280-1	543 (600-1)	1280-1 $\frac{1}{8}$ 543 (600-1 $\frac{1}{8}$ )	NA
<b>C</b> CIRCLING	1380-1	643 (700-1)	1380-1 $\frac{3}{4}$ 643 (700-1 $\frac{3}{4}$ )	NA

