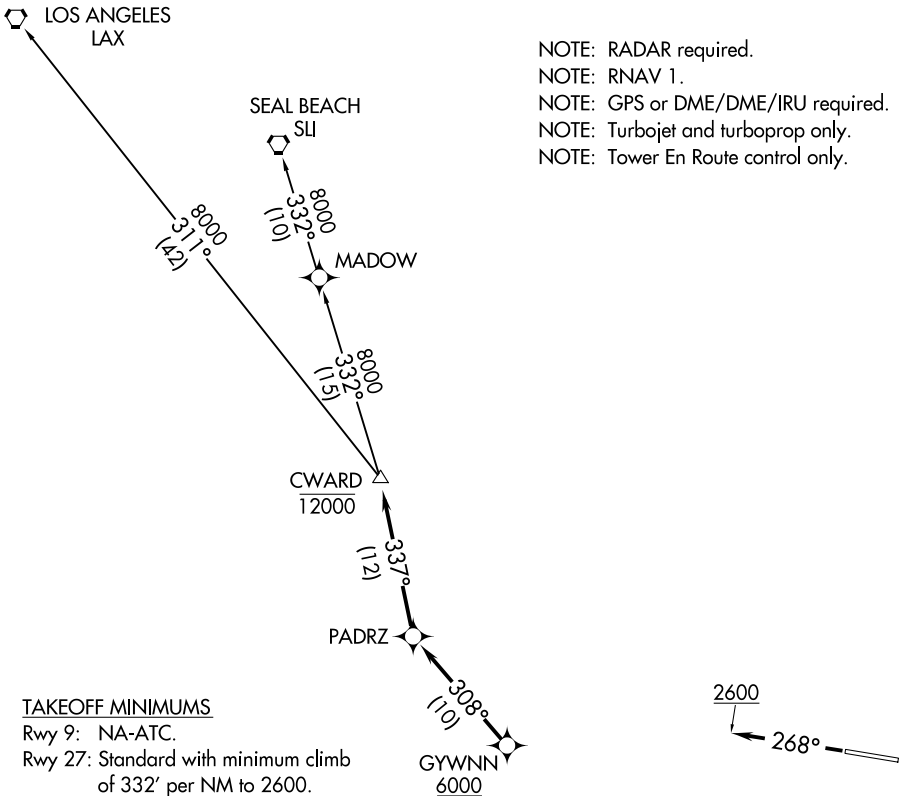


ATIS
132.025
RAMONA TOWER ★
119.875
SOCAL DEP CON
119.6 363.1

TOP ALTITUDE:
AS ASSIGNED BY ATC

NOTE: RADAR required.
NOTE: RNAV 1.
NOTE: GPS or DME/DME/IRU required.
NOTE: Turbojet and turboprop only.
NOTE: Tower En Route control only.



TAKEOFF MINIMUMS
Rwy 9: NA-ATC.
Rwy 27: Standard with minimum climb
of 332' per NM to 2600.

NOTE: Chart not to scale.

DEPARTURE ROUTE DESCRIPTION

TAKEOFF RUNWAY 27: Climb heading 268° to 2600, expect vectors to cross GYWNN at or above 6000, then on track 308° to PADRZ, then on track 337° to cross CWARD at or below 12000, thence. . . .
. . . .on transition. Maintain ATC assigned altitude. Expect filed altitude 10 minutes after departure.

LOS ANGELES TRANSITION (CWARD2.LAX)
SEAL BEACH TRANSITION (CWARD2.SLI)