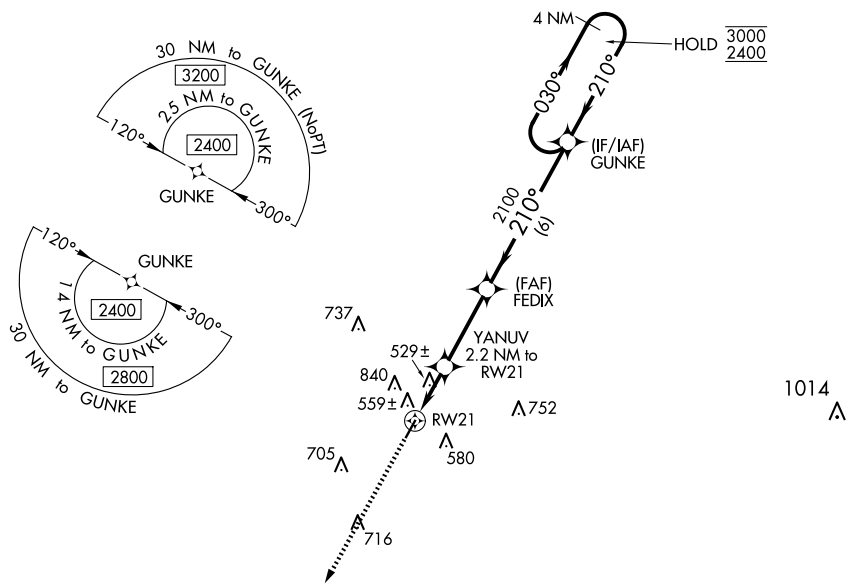


WAAS CH <b>53431</b> <b>W21A</b>	APP CRS <b>210°</b>	Rwy Idg TDZE Apt Elev	<b>4000</b> <b>364</b> <b>364</b>
--	------------------------	-----------------------------	---

**RNAV (GPS) RWY 21**  
WINONA-MONTGOMERY COUNTY (5A6)

RNP APCH - GPS.		MISSED APPROACH: Climb to 2500 direct GUCEY and hold.
⚠ NA Rwy 21 helicopter visibility reduction below 1 SM NA. Procedure NA at night. Circling NA northwest of Rwy 3-21. When local altimeter setting not received, use GNF altimeter setting.		
AWOS-3PT <b>120.175</b>	MEMPHIS CENTER <b>128.5 279.55</b>	CTAF <b>122.9 0</b>



ELEV 364	TDZE 364
----------	----------

MIRL Rwy 3-21 0

2500	GUCEY	VGSI and descent angles not coincident (VGSI Angle 4.00/TCH 30).	4 NM Holding Pattern
1080	YANUV 2.2 NM to RWY 21	FEDIX	GUNKE
2.2 NM	3.2 NM	6 NM	
2100	2100	2100	3000
030°	210°	210°	210°

CATEGORY	A	B	C	D
LP MDA	860-1	496 (500-1)	860-1 <sup>3</sup> / <sub>8</sub> 496 (500-1 <sup>3</sup> / <sub>8</sub> )	NA
LNAV MDA	900-1	536 (600-1)	900-1 <sup>1</sup> / <sub>2</sub> 536 (600-1 <sup>1</sup> / <sub>2</sub> )	NA
CIRCLING	960-1	596 (600-1)	1100-2 736 (800-2)	NA

SC-4, 15 MAY 2025 to 12 JUN 2025

SC-4, 15 MAY 2025 to 12 JUN 2025