

MIAMI DEP CON
125.5 354.1
AWOS-3
118.375
CTAF
122.8

TOP ALTITUDE:
ASSIGNED BY ATC

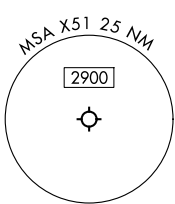
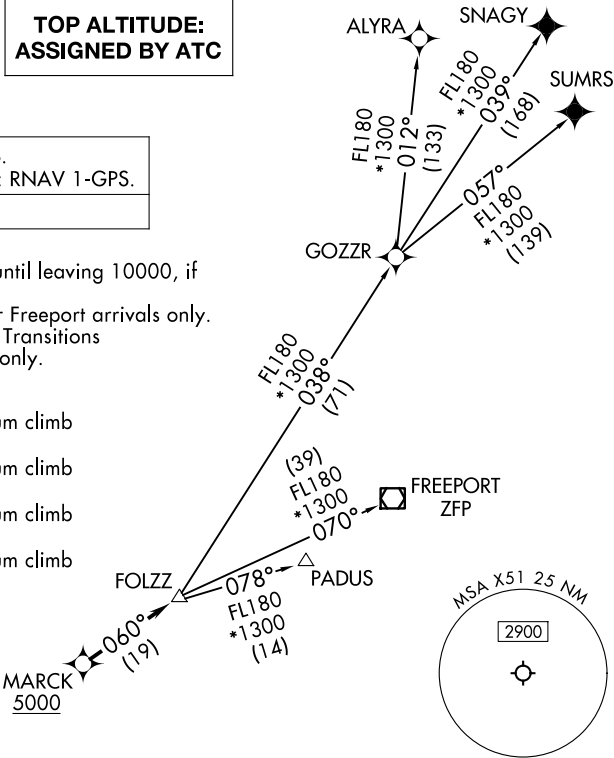
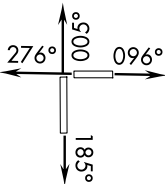
RNAV-1 DME/DME/IRU or GPS.
SNAGY and SUMRS Transitions: RNAV 1-GPS.

RADAR required.

NOTE: Jet aircraft only.
NOTE: Accelerate to 250K until leaving 10000, if
unable, advise ATC.
NOTE: PADUS Transition for Freeport arrivals only.
NOTE: SNAGY and SUMRS Transitions
for European traffic only.

TAKEOFF MINIMUMS

- Rwy 10: Standard with minimum climb
of 500’/NM to 2400.
Rwy 18: Standard with minimum climb
of 500’/NM to 1800.
Rwy 28: Standard with minimum climb
of 500’/NM to 1900.
Rwy 36: Standard with minimum climb
of 500’/NM to 2200.



NOTE: Chart not to scale.



DEPARTURE ROUTE DESCRIPTION

- TAKEOFF RUNWAY 10: Climb on heading 096° or as assigned by ATC for RADAR
vectors to cross MARCK at or above 5000, thence. . .
TAKEOFF RUNWAY 18: Climb on heading 185° or as assigned by ATC for RADAR
vectors to cross MARCK at or above 5000, thence. . .
TAKEOFF RUNWAY 28: Climb on heading 276° or as assigned by ATC for RADAR
vectors to cross MARCK at or above 5000, thence. . .
TAKEOFF RUNWAY 36: Climb on heading 005° or as assigned by ATC for RADAR
vectors to cross MARCK at or above 5000, thence. . .

. . .on track 060° to FOLZZ, then on assigned transition. Maintain ATC assigned
altitude, expect filed altitude within 10 minutes after departure.

- ALYRA TRANSITION (FOLZZ3.ALYRA)
FREEPORT TRANSITION (FOLZZ3.ZFP)
GOZZR TRANSITION (FOLZZ3.GOZZR)
PADUS TRANSITION (FOLZZ3.PADUS)
SNAGY TRANSITION (FOLZZ3.SNAGY)
SUMRS TRANSITION (FOLZZ3.SUMRS)

SE-3, 15 MAY 2025 to 12 JUN 2025

SE-3, 15 MAY 2025 to 12 JUN 2025