

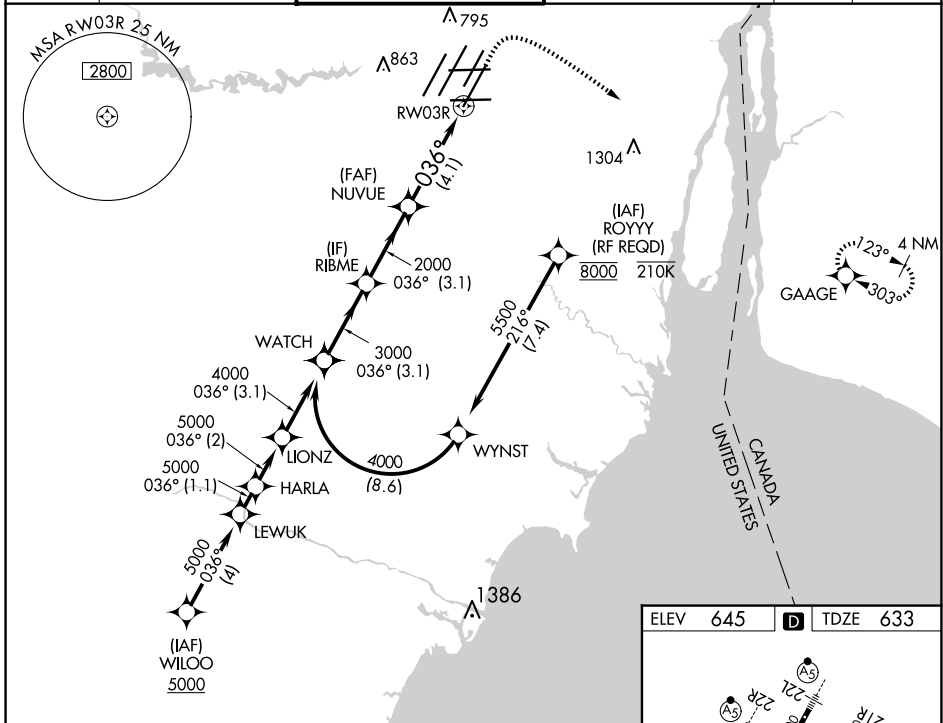
|             |          |              |
|-------------|----------|--------------|
| APP CRS     | Rwy Ldg  | <b>10001</b> |
| <b>036°</b> | TDZE     | <b>633</b>   |
|             | Apt Elev | <b>645</b>   |

# RNAV (RNP) W RWY 3R

DETROIT METRO WAYNE COUNTY (DTW)

|  |  |        |  |
|--|--|--------|--|
| RNP AR APCH.   |  | ALSF-2 | MISSED APPROACH: Climb to 1100 then climbing right turn to 4000 direct GAAGE and hold. |
| <p>For uncompensated Baro-VNAV systems, procedure NA below -19°C (-2°F) or above 54°C (130°F). Simultaneous approach authorized.</p> |  |        |  |

|                |                     |                      |  |               |       |
|----------------|---------------------|----------------------|--|---------------|-------|
| D-ATIS         | DETROIT APP CON     | METRO TOWER          | GND CON  | CINC DEL      | CPDLC |
| <b>133.675</b> | <b>125.15 284.0</b> | <b>118.4 317.725</b> | <b>121.8 (NW) 119.45 (NE)</b><br><b>132.725 (SW) 119.25 (SE)</b> | <b>120.65</b> |       |



EC-1, 12 JUN 2025 to 10 JUL 2025

EC-1, 12 JUN 2025 to 10 JUL 2025

