

RNAV (GPS)-A

ELKINS/RANDOLPH COUNTY (JENNINGS RANDOLPH FLD) (EKN)

APP CRS	Rwy Idg	N/A
331°	TDZE	N/A
	Apt Elev	1987

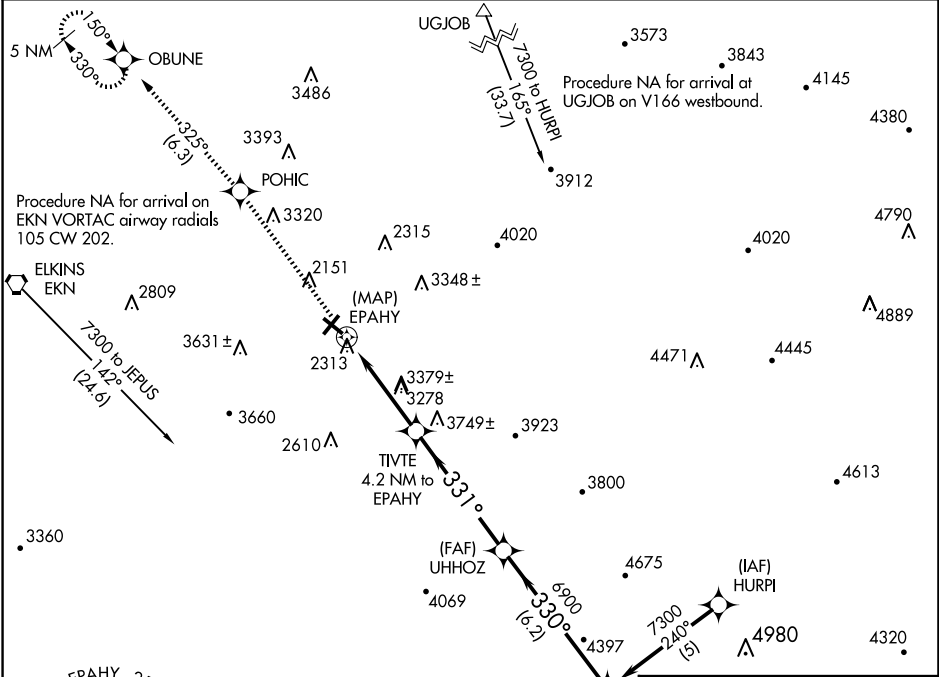
RNP APCH.

Circling Rwy 14, 23, 32 NA at night. When local altimeter setting not received, use Buckhannon altimeter setting and increase all MDA 100 feet.

-20°C

MISSED APPROACH: Climb to 4500 direct POHIC and on track 325° to OBUNE and hold.

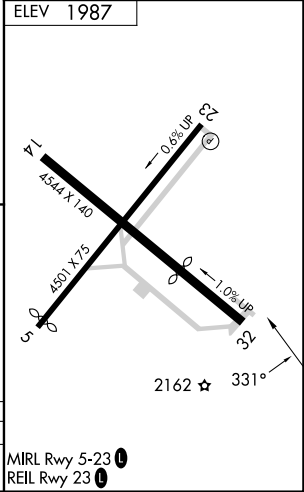
ASOS 119.275	CLARKSBURG APP CON ★ 121.15 284.65	CTAF 123.6	122.9 0
------------------------	--	----------------------	----------------



NE-4, 12 JUN 2025 to 10 JUL 2025

NE-4, 12 JUN 2025 to 10 JUL 2025

MSA EPAHY 25 NM 6100	ELEV 1987
-------------------------	-----------



4500	POHIC	tr 325°	OBUNE	Visual Segment - Obstacles.	OMORE
				TIVTE 4.2 NM to EPAHY	UHHOZ
EPAHY		331°		330°	7300
5300		6900			
4.2 NM		5.3 NM		6.2 NM	

CATEGORY	A	B	C	D
CIRCLING	3640-1¼ 1653 (1700-1¼)	3640-1½ 1653 (1700-1½)	3720-3 1733 (1800-3)	NA

MIRL Rwy 5-23

REIL Rwy 23

RNAV (GPS)-A