

VOR/DME RWY 36

VOR/DME FTK 109.6 Chan 33	APCH CRS 349°	Rwy ldg TDZE 5184 740 Arprt Elev 754
---	-------------------------	--

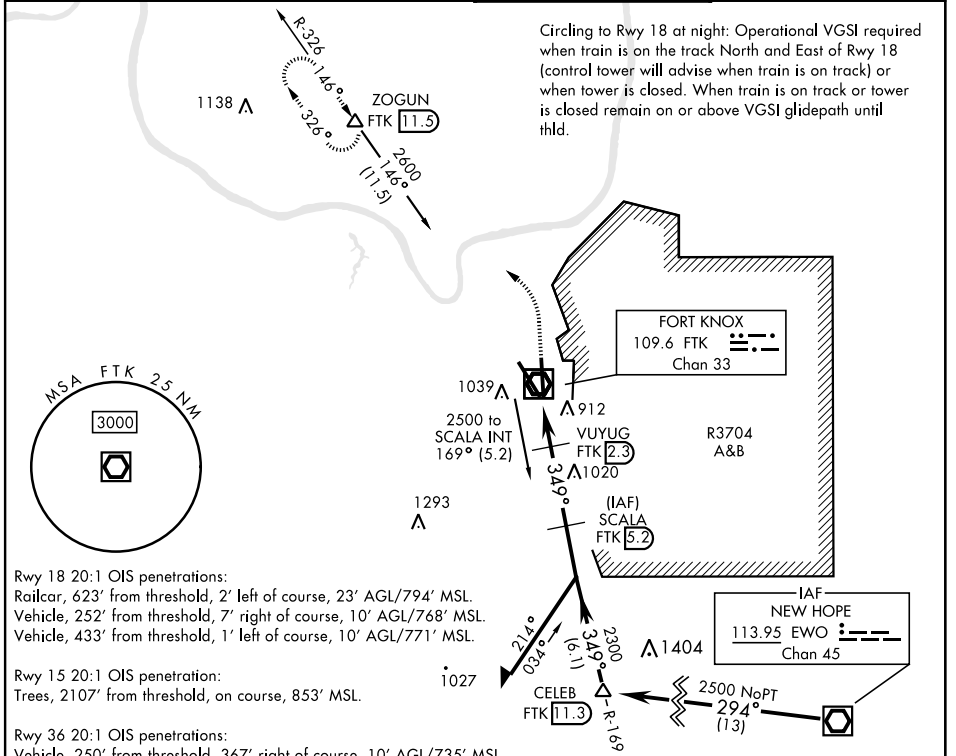
[USA]

GODMAN AAF (KFKT)

▽ * At night, operational VGSI required, remain on or above VGSI glidepath until threshold.
Visibility reduction by helicopters not authorized.
** Circling NA E of Rwy 18-36. Circling to rwy 15 NA at night.

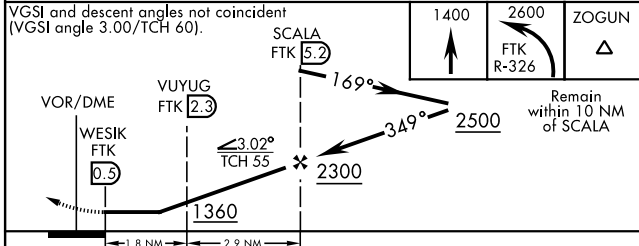
ODALS
MISSED APPROACH: Climb to 1400, then climbing left turn to 2600 on FTK VOR/DME R-326 to ZOGUN INT/FTK 11.5 DME and hold.

ATIS 109.6	LOUISVILLE APP CON 132.075 327.0	TOWER ★ 133.35 (CTAF) 0	GND CON 121.9 239.3
----------------------	--	--	-------------------------------



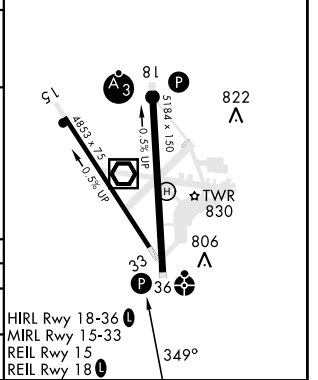
Circling to Rwy 18 at night: Operational VGSI required when train is on the track North and East of Rwy 18 (control tower will advise when train is on track) or when tower is closed. When train is on track or tower is closed remain on or above VGSI glidepath until thld.

- Rwy 18 20:1 OIS penetrations:**
 Railcar, 623' from threshold, 2' left of course, 23' AGL/794' MSL.
 Vehicle, 252' from threshold, 7' right of course, 10' AGL/768' MSL.
 Vehicle, 433' from threshold, 1' left of course, 10' AGL/771' MSL.
- Rwy 15 20:1 OIS penetration:**
 Trees, 2107' from threshold, on course, 853' MSL.
- Rwy 36 20:1 OIS penetrations:**
 Vehicle, 250' from threshold, 367' right of course, 10' AGL/735' MSL.
 Trees, 1685' from threshold, 158' right of course, 806' MSL.



ELEV	754	TDZE	740
------	-----	------	-----

CATEGORY	A	B	C	D
S-36*	1180-1 440 (500-1)		1180-1¼ 440 (500-1¼)	
CIRCLING**	1340-1 586 (600-1)		1340-1½ 586 (600-1½)	1340-2 586 (600-2)



VOR/DME RWY 36

SE-1, 12 JUN 2025 to 10 JUL 2025

SE-1, 12 JUN 2025 to 10 JUL 2025