

RNAV 1- DME/DME/IRU or GPS. From KYLOW on FICKY, GROGU and DINTY Transitions: GPS.

MCKEY, RIZIN, SCTRR and STOKD Transitions:
RADAR required for non-GPS equipped aircraft.

TOP ALTITUDE:

**FICKY and GROGU TRANSITIONS: 14000;
SCTRR, STOKD, MCKEY, DINTY, and
RIZIN TRANSITIONS: FL230**

D-ATIS DEP

135.65

CLNC DEL

120.35 327.0

CPDLC

GND CON

(N) 121.65 327.0

(S) 121.75 327.0

(W) 121.4 327.0

LOS ANGELES TOWER

(N) 133.9 239.3

(S) 120.95 379.1

SOCAL DEP CON

124.3 363.2 (045°-224°)

125.2 263.025 (225°-044°)

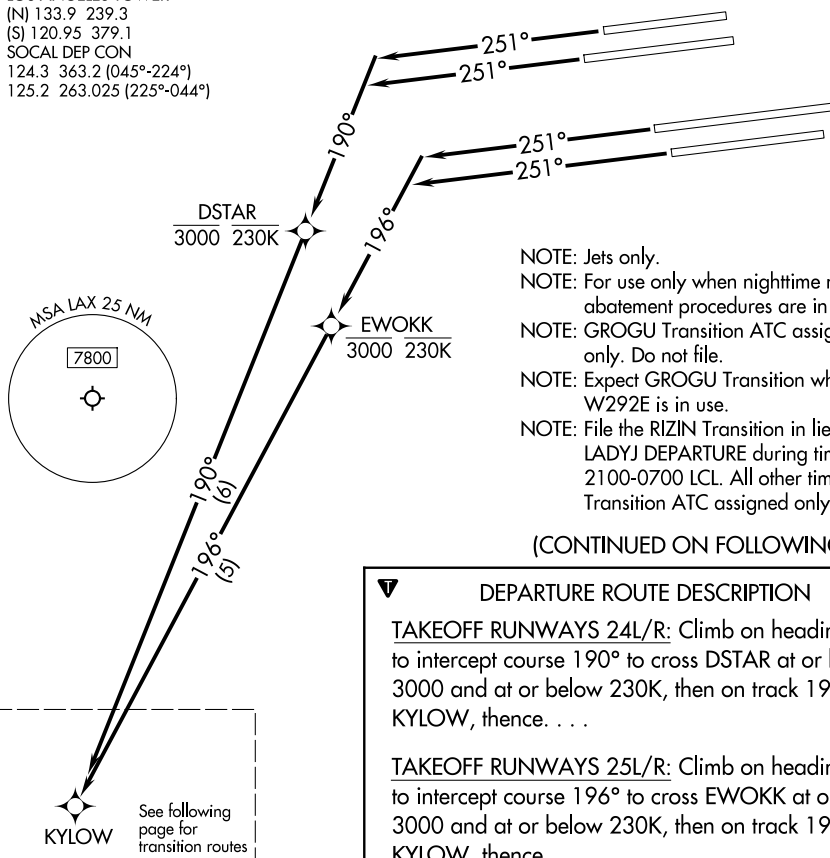
TAKEOFF MINIMUMS

Rwy 24L: Standard with minimum climb of 280' per NM to 628.

Rwy 24R: Standard with minimum climb of 260' per NM to 628.

Rwy 25L: Standard with minimum climb of 230' per NM to 628.

Rwy 25R: Standard with minimum climb of 260' per NM to 628.



NOTE: Jets only.

NOTE: For use only when nighttime noise abatement procedures are in effect.

NOTE: GROGU Transition ATC assigned only. Do not file.

NOTE: Expect GROGU Transition when W292E is in use.

NOTE: File the RIZIN Transition in lieu of the LADYJ DEPARTURE during time periods 2100-0700 LCL. All other times RIZIN Transition ATC assigned only.

(CONTINUED ON FOLLOWING PAGE)

DEPARTURE ROUTE DESCRIPTION

TAKEOFF RUNWAYS 24L/R: Climb on heading 251° to intercept course 190° to cross DSTAR at or below 3000 and at or below 230K, then on track 190° to KYLOW, thence. . . .

TAKEOFF RUNWAYS 25L/R: Climb on heading 251° to intercept course 196° to cross EWOKK at or below 3000 and at or below 230K, then on track 196° to KYLOW, thence. . .

... (transition). Departures on FICKY and GROGU
Transitions maintain 14000. All other Transitions
maintain FL230. Expect filed altitude 10 minutes
after departure.

NOTE: Chart not to scale.