

(GLADZ4.GLADZ) 24305

AL-256 (FAA)

MIAMI-OPA LOCKA EXEC (OPF)
MIAMI, FLORIDA

GLADZ FOUR DEPARTURE (RNAV)

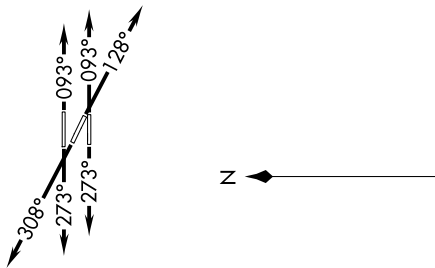
SE-3, 12 JUN 2025 to 10 JUL 2025

**TOP ALTITUDE:
ASSIGNED BY ATC**

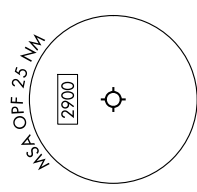
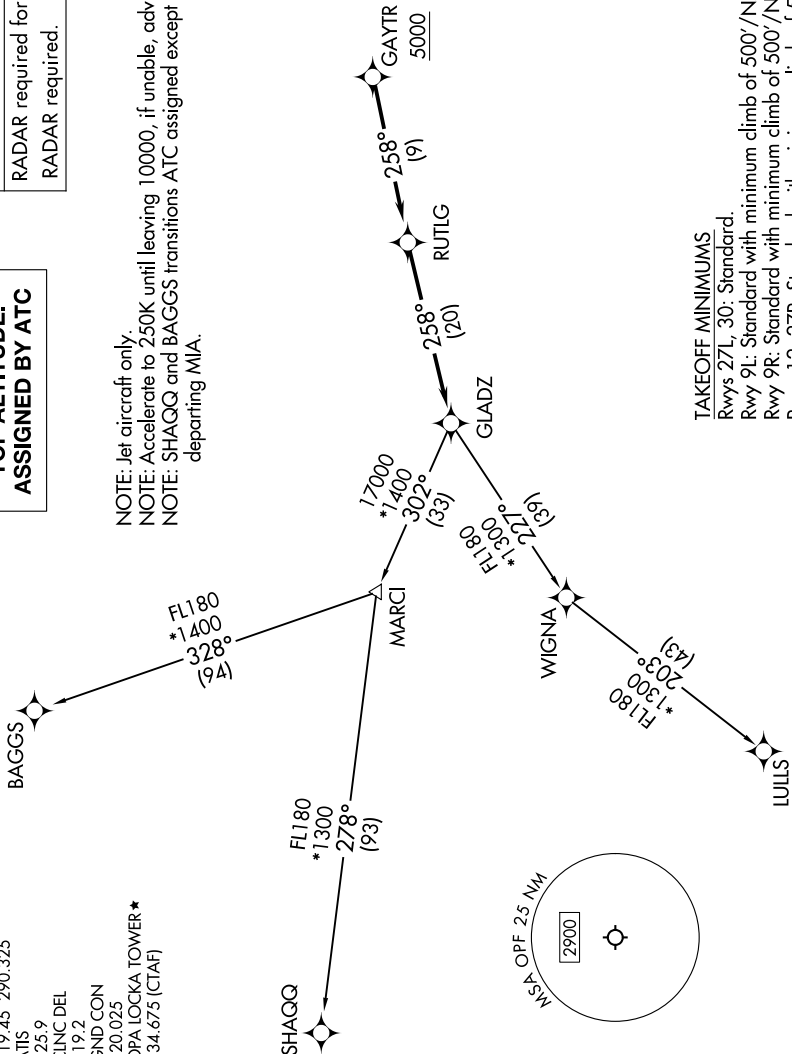
RNAV-1 DME/DME/IRU or GPS.
RADAR required for NON-GPS equipped aircraft.
RADAR required.

MIAMI DEP CON
119.45 290.325
ATIS
125.9
CLNC DEL
119.2
GND CON
120.025
OPA LOCKA TOWER *
134.675 (CTAF)

NOTE: Jet aircraft only.
NOTE: Accelerate to 250K until leaving 10000, if unable, advise ATC.
NOTE: SHAGQ and BAGGS transitions ATC assigned except aircraft departing MIA.



TAKEOFF MINIMUMS
Rwys 27L, 30: Standard
Rwy 9L: Standard with minimum climb of 500'/NM to 1000.
Rwy 9R: Standard with minimum climb of 500'/NM to 700.
Rwys 12, 27R: Standard with minimum climb of 500'/NM to 600.



(CONTINUED ON FOLLOWING PAGE)

SE-3, 12 JUN 2025 to 10 JUL 2025

GLADZ FOUR DEPARTURE (RNAV) (GLADZ4.GLADZ) 31OCT24

MIAMI, FLORIDA
MIAMI-OPA LOCKA EXEC (OPF)

NOTE: Chart not to scale.