

LOC/DME I-MSP 110.3 Chan 40	APP CRS 301°	Rwy ldg TDZE 823 Apt Elev 842	10000
---	------------------------	---	--------------

ILS or LOC RWY 30L

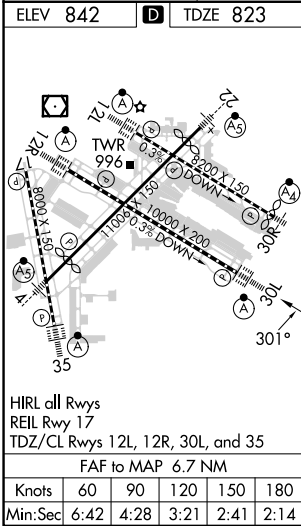
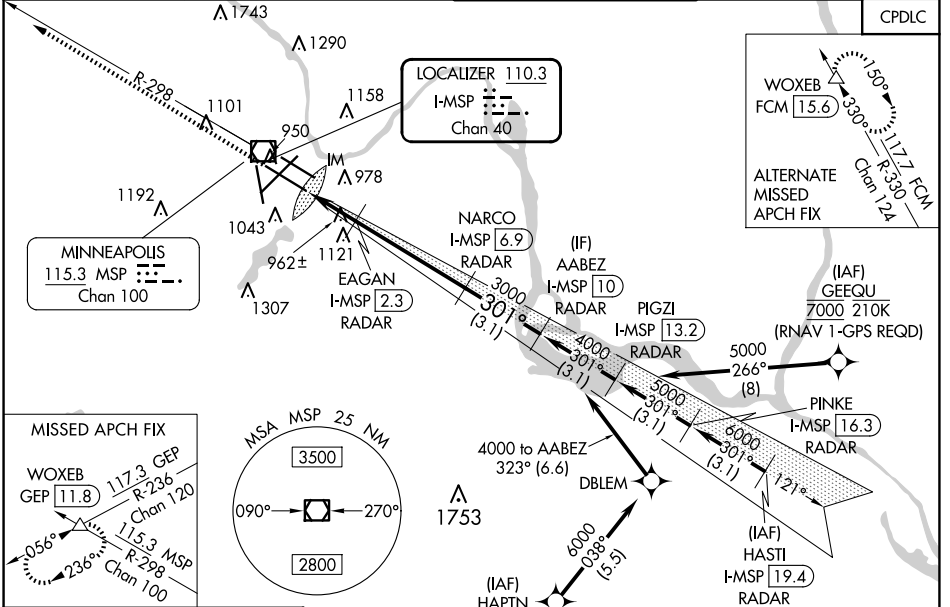
MINNEAPOLIS-ST PAUL INTL/WOLD-CHAMBERLAIN (MSP)

⚠ DME or RADAR required. Simultaneous approaches authorized with Rwy 30R and ILS V RWY 35 (CONVERGING). For inop ALS, increase S-ILS 30L Cat E visibility to RVR 4000, and increase S-LOC 30L Cat E visibility to RVR 6000.

ALS-F-2

MISSED APPROACH: Climb to 1300 then climb to 3000 on heading 301° and MSP VOR/DME R-298 to WOXEB INT/ GEP VORTAC 11.8 DME and hold.

D-ATIS ARR 135.35 239.275 DEP 120.8	MINNEAPOLIS APP CON 118.725 335.65 (Rwy 35) 119.3 335.65 (12L-30R, 4-22, 17) 126.95 335.65 (12R-30L)	MINNEAPOLIS TOWER 123.675 273.55 (17-35) 123.95 273.55 (12L-30R) 126.7 273.55 (12R-30L, 4-22)	GND CON N 121.8 348.6 S 121.9 348.6 W 127.925 348.6	CLNC DEL 133.2
--	---	--	--	--------------------------



1300 ↑ 3000 ↑ hdg 301° *LOC only I-MSP 0.2 *I-MSP 1.2 IM 1520* 3000 3000 301° 4000 GS 3.00° TCH 55 0.2 0.8 NM 1.1 NM 4.6 NM 3.1 NM	WOXEB VGSi and ILS glidepath not coincident (VGSi Angle 3.00/TCH 78). MSP R-298 △ AABEZ I-MSP 10 RADAR																								
	EAGAN I-MSP 2.3 RADAR NARCO I-MSP 6.9 RADAR IGZI I-MSP 13.2 RADAR PIGZI I-MSP 10 RADAR GEEGU I-MSP 16.3 RADAR PINKE I-MSP 19.4 RADAR HASTI I-MSP 7000 RADAR HAPTAN I-MSP 7000 RADAR (RNAV 1-GPS REQD) DBLEM I-MSP 323° (6.6) IGZI I-MSP 301° (3.1) PIGZI I-MSP 301° (3.1) GEEGU I-MSP 301° (3.1) PINKE I-MSP 301° (3.1) HASTI I-MSP 301° (3.1) HAPTAN I-MSP 301° (3.1)																								
<table border="1"> <thead> <tr> <th>CATEGORY</th> <th>A</th> <th>B</th> <th>C</th> <th>D</th> <th>E</th> </tr> </thead> <tbody> <tr> <td>S-ILS 30L</td> <td colspan="5">1023/18 200 (200-½)</td> </tr> <tr> <td>S-LOC 30L</td> <td>1220/24</td> <td>397 (400-½)</td> <td colspan="3">1220/35 397 (400-¾)</td> </tr> </tbody> </table>	CATEGORY	A	B	C	D	E	S-ILS 30L	1023/18 200 (200-½)					S-LOC 30L	1220/24	397 (400-½)	1220/35 397 (400-¾)			<table border="1"> <tr> <td>CIRCLING</td> <td>1360-1</td> <td>518 (600-1)</td> <td>1460-1¾ 618 (700-1¾)</td> <td>1660-2¾ 818 (900-2¾)</td> <td>1800-3 958 (1000-3)</td> </tr> </table>	CIRCLING	1360-1	518 (600-1)	1460-1¾ 618 (700-1¾)	1660-2¾ 818 (900-2¾)	1800-3 958 (1000-3)
CATEGORY	A	B	C	D	E																				
S-ILS 30L	1023/18 200 (200-½)																								
S-LOC 30L	1220/24	397 (400-½)	1220/35 397 (400-¾)																						
CIRCLING	1360-1	518 (600-1)	1460-1¾ 618 (700-1¾)	1660-2¾ 818 (900-2¾)	1800-3 958 (1000-3)																				

ILS or LOC RWY 30L

NC-1, 12 JUN 2025 to 10 JUL 2025

NC-1, 12 JUN 2025 to 10 JUL 2025