

# RNAV (GPS) RWY 28

APCH CRS	Rwy Idg	<b>7375</b>
<b>280°</b>	TDZE	<b>14</b>
	Arpt Elev	<b>15</b>

[USN]

NORFOLK NS (CHAMBERS FLD) (KNGU)

RNP APCH

▼ \*When ALS inop, increase vis to 7/8 mile. Helicopter vis reduction below 3/4 NA.  
 \*\*When ALS inop, increase CAT AB vis to 1 mile; CAT CDE vis to 1 1/4 miles.  
 \*\*\*Circling not authorized S of Rwy 10-28.

SSALF

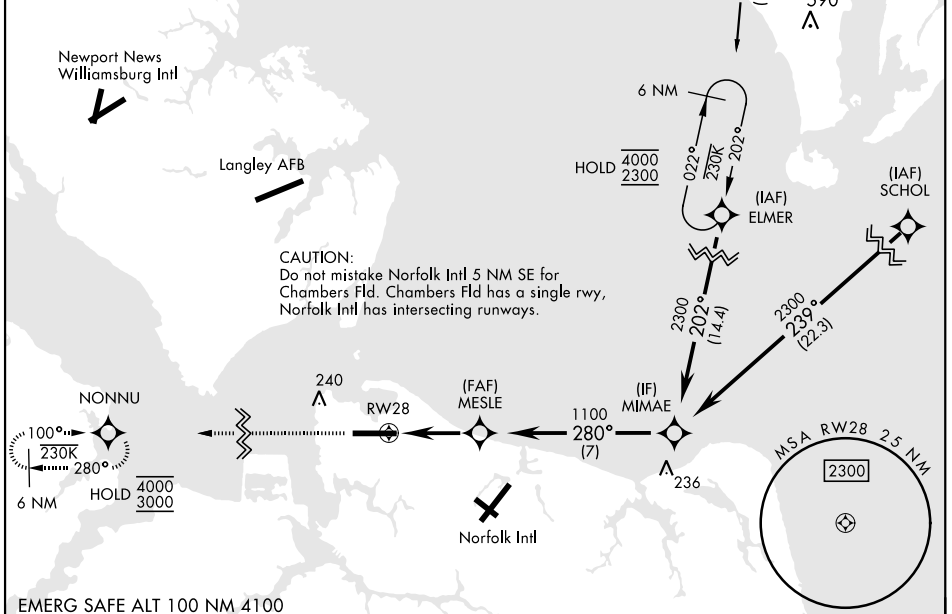


MISSED APPROACH: Climb to 3000 direct NONNU and hold, continue climb in hold to 3000.

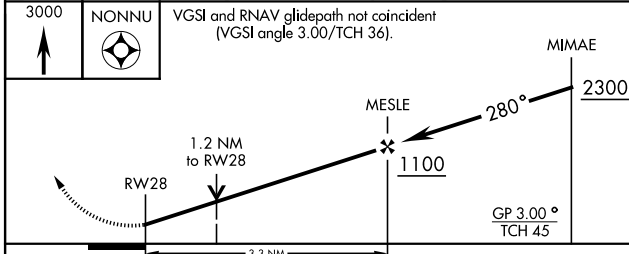
ATIS	APP CON	CHAMBERS TOWER	GND CON	CLNC DEL	ASR/PAR
<b>118.425 338.225</b>	<b>118.9 273.475</b>	<b>124.3 379.15</b>	<b>121.8 370.85</b>	<b>120.7 339.8</b>	

For uncompensated Baro-VNAV systems, LNAV/VNAV NA below -15°C (5°F) and above 54°C (129°F).

NORFOLK NS HELIPORT 1 NM SW  
 Use caution in circling approach.



EMERG SAFE ALT 100 NM 4100



CATEGORY	A	B	C	D	E
LNAV/VNAV DA*	303-3/4 289 (300-3/4)	314-3/4 300 (300-3/4)	322-3/4 308 (400-3/4)	333-3/4	319 (400-3/4)
LNAV MDA **	440-3/4 426 (500-3/4)		440-1	426	(500-1)
CIRCLING ***	480-1 465 (500-1)	540-1 525 (600-1)	540-1 1/2 525 (600-1 1/2)	580-2	565 (600-2)

ELEV	15	TDZE	14
------	----	------	----

Rwy 10 Idg 8071'  
 Rwy 28 Idg 7375'

HIRL Rwy 10-28  
 REIL Rwy 10-28  
 TDZ/CL Rwy 10-28

# RNAV (GPS) RWY 28

NE-3, 12 JUN 2025 to 10 JUL 2025

NE-3, 12 JUN 2025 to 10 JUL 2025