

TACAN Z RWY 10

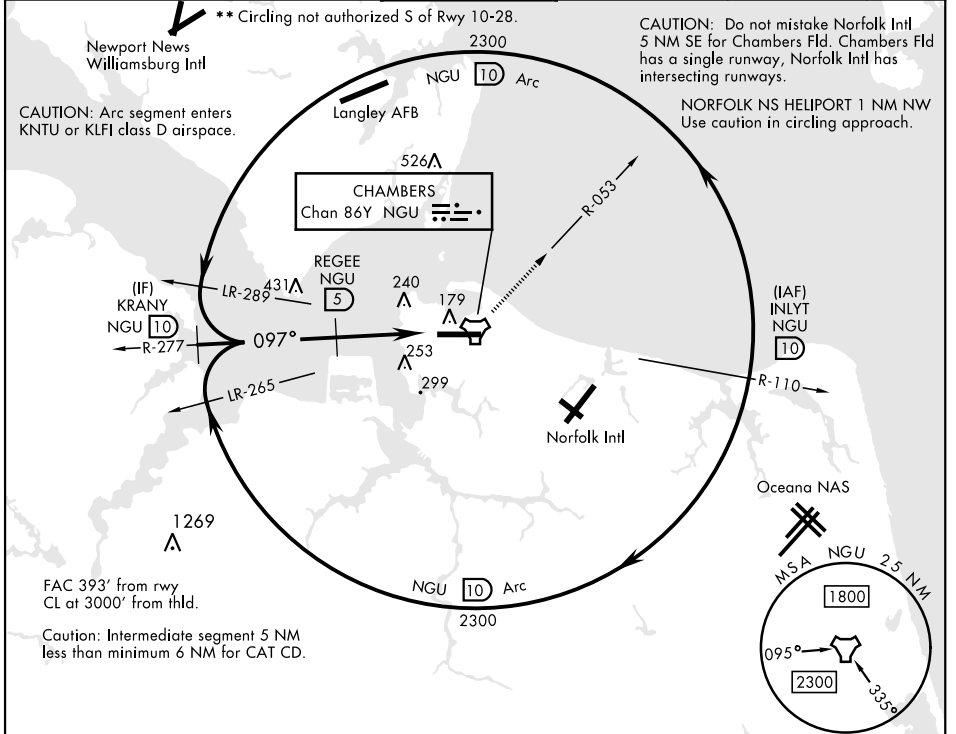
TACAN NGU Chan 86Y	APCH CRS 097°	Rwy ldg 8071 TDZE 14 Arprt Elev 15
------------------------------	-------------------------	---

[USN]

NORFOLK NS (CHAMBERS FLD) (KNGU)

RADAR required	ALSF-2	MISSED APPROACH: Climbing left turn to 2300 on NGU TACAN R-053 then as directed by ATC.
<p>▼ * When ALS inop, increase CAT AB vis to 1 mile, CAT CD vis to 1½ miles.</p>		

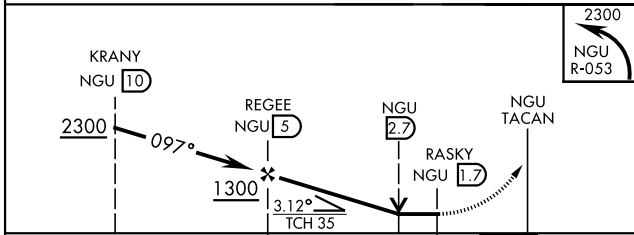
ATIS 118.425 338.225	APP CON 118.9 273.475	CHAMBERS TOWER 124.3 379.15	GND CON 121.8 370.85	CLNC DEL 120.7 339.8	ASR/PAR
--------------------------------	---------------------------------	---------------------------------------	--------------------------------	--------------------------------	---------



NE-3, 12 JUN 2025 to 10 JUL 2025

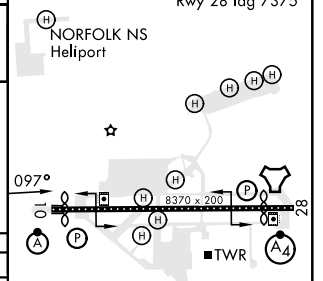
NE-3, 12 JUN 2025 to 10 JUL 2025

EMERG SAFE ALT 100 NM 4100



ELEV 15	TDZE 14
---------	---------

Rwy 10 ldg 8071'
Rwy 28 ldg 7375'



CATEGORY	A		B		C		D	
S-10*	520-½	506 (600-½)	520-1	506 (600-1)	520-1	506 (600-1)	520-1	506 (600-1)
CIRCLING**	520-1 505 (600-1)	540-1 525 (600-1)	540-1½ 525 (600-1½)	580-2 565 (600-2)	540-1½ 525 (600-1½)	580-2 565 (600-2)	540-1½ 525 (600-1½)	580-2 565 (600-2)

HIRL Rwy 10-28
REIL Rwy 10-28
TDZL/CL Rwy 10-28

TACAN Z RWY 10