

LOC I-SLN <b>108.9</b>	APP CRS <b>353°</b>	Rwy Ldg <b>12300</b>
		TDZE <b>1271</b>
		Apt Elev <b>1288</b>

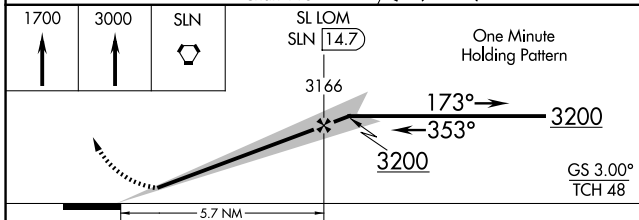
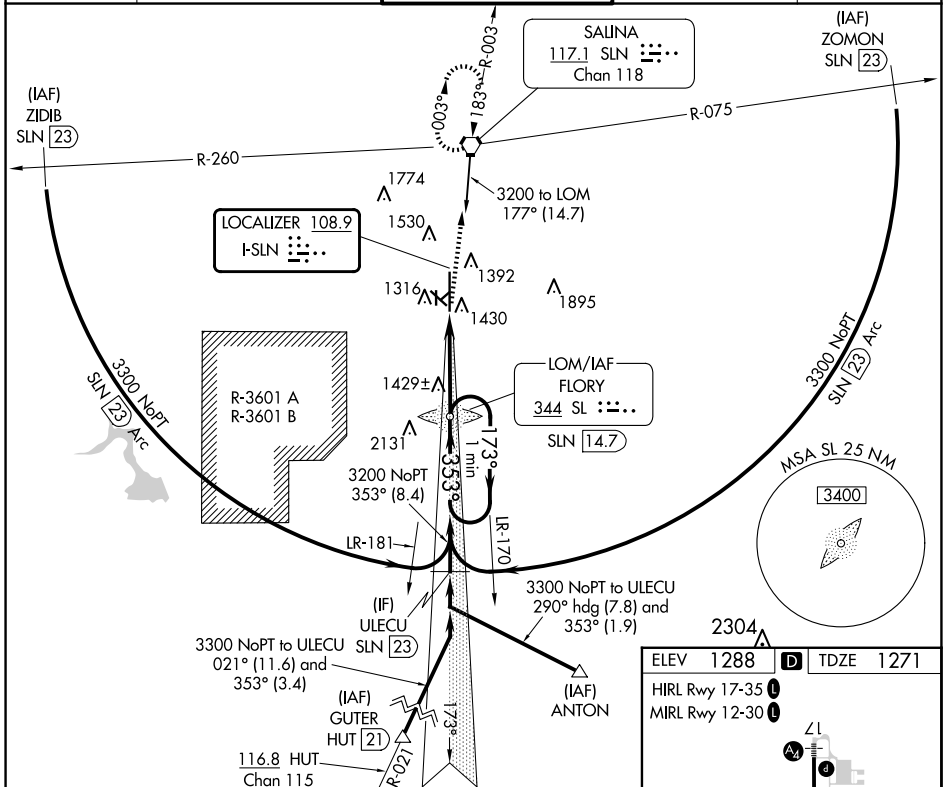
# ILS or LOC RWY 35

SALINA RGNL (SLN)

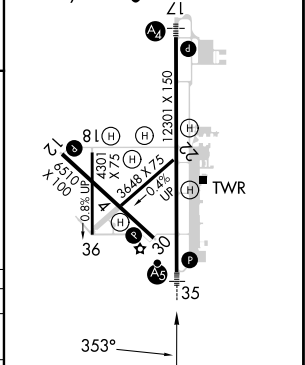
**▼** For inop ALS, increase S-LOC 35 Cat D visibility to 1 1/2 SM and Cat E visibility to 1 1/2 SM. For inop ALS, increase S-ILS 35 Cat E visibility to 3/4 SM. Circling NA for Cats D and E southwest of Rwy 12-30.

**▲** MALSR MISSED APPROACH: Climb to 1700 then climb to 3000 direct SLN VORTAC and hold.

ATIS <b>120.15</b>	KANSAS CITY CENTER <b>134.9 363.2</b>	SALINA TOWER ★ <b>119.3 (CTAF) 257.7</b>	GND CON <b>121.9 360.8</b>	UNICOM <b>122.95</b>
-----------------------	--	---	-------------------------------	-------------------------



ELEV 1288	<b>D</b>	TDZE 1271
HIRL Rwy 17-35		
MIRL Rwy 12-30		



CATEGORY	A	B	C	D	E
S-ILS 35	1471-1/2 200 (200-1/2)				
S-LOC 35	1680-1/2 409 (400-1/2)				
CIRCLING	1820-1 532 (600-1)	1840-1 552 (600-1)	1860-1 1/2 572 (600-1 1/2)	1860-2 572 (600-2)	1920-2 1/4 632 (700-2 1/4)

FAF to MAP 5.7 NM					
Knots	60	90	120	150	180
Min:Sec	5:42	3:48	2:51	2:17	1:54

NC-2, 12 JUN 2025 to 10 JUL 2025

NC-2, 12 JUN 2025 to 10 JUL 2025