

LOC/DME I-SNA <b>111.75</b> Chan <b>54(Y)</b>	APP CRS <b>196°</b>	Rwy Ldg TDZE Apt Elev	<b>5700</b> <b>54</b> <b>56</b>
---	------------------------	-----------------------------	---------------------------------------

# ILS RWY 20R (SA CAT I)

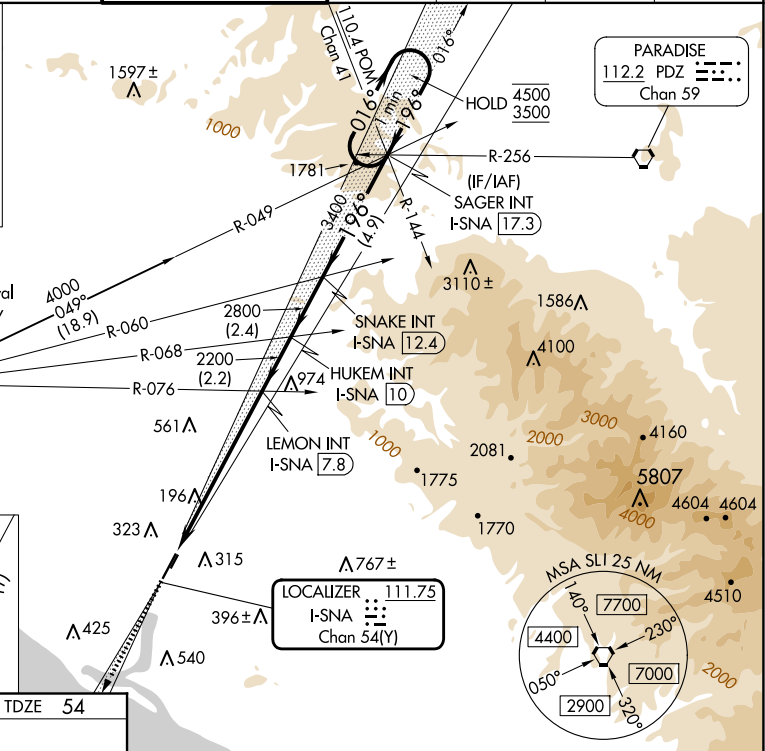
JOHN WAYNE/ORANGE COUNTY (SNA)

**⚠** Requires specific OPSPEC, MSPEC, or LOA approval.  
Procedure NA when tower closed.

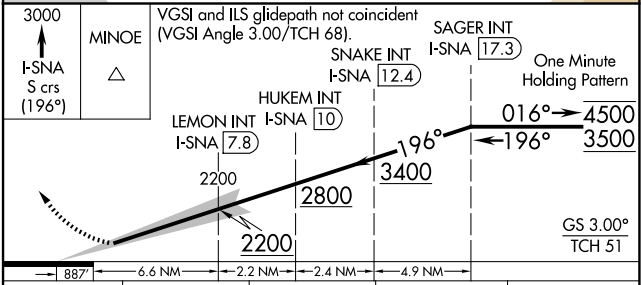
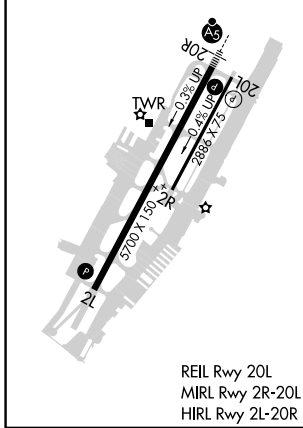
**MALS** MISSED APPROACH: Climb to 3000 on I-SNA LOC south course (196°) to MINOE INT/I-SNA 10.9 DME.

D-ATIS <b>126.0</b>	SOCAL APP CON <b>121.3 263.1</b>	JOHN WAYNE TOWER ★ <b>126.8 (CTAF) 343.625</b>	GND CON <b>120.8</b>	CLNC DEL <b>118.0</b>	CPDLC	UNICOM <b>122.95</b>
------------------------	-------------------------------------	---	-------------------------	--------------------------	-------	-------------------------

ALTERNATE MISSED APCH FIX  
SEAL BEACH  
SLI 115.7  
Chan 104



ELEV 56	<b>D</b>	TDZE 54
---------	----------	---------



CATEGORY	A	B	C	D
S-ILS 20R	RA 201/14 167 DA 221			

**SA CATEGORY I ILS - SPECIAL AIRCREW & AIRCRAFT CERTIFICATION REQUIRED**

SW-3, 12 JUN 2025 to 10 JUL 2025

SW-3, 12 JUN 2025 to 10 JUL 2025