

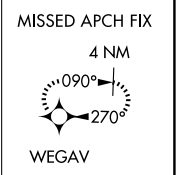
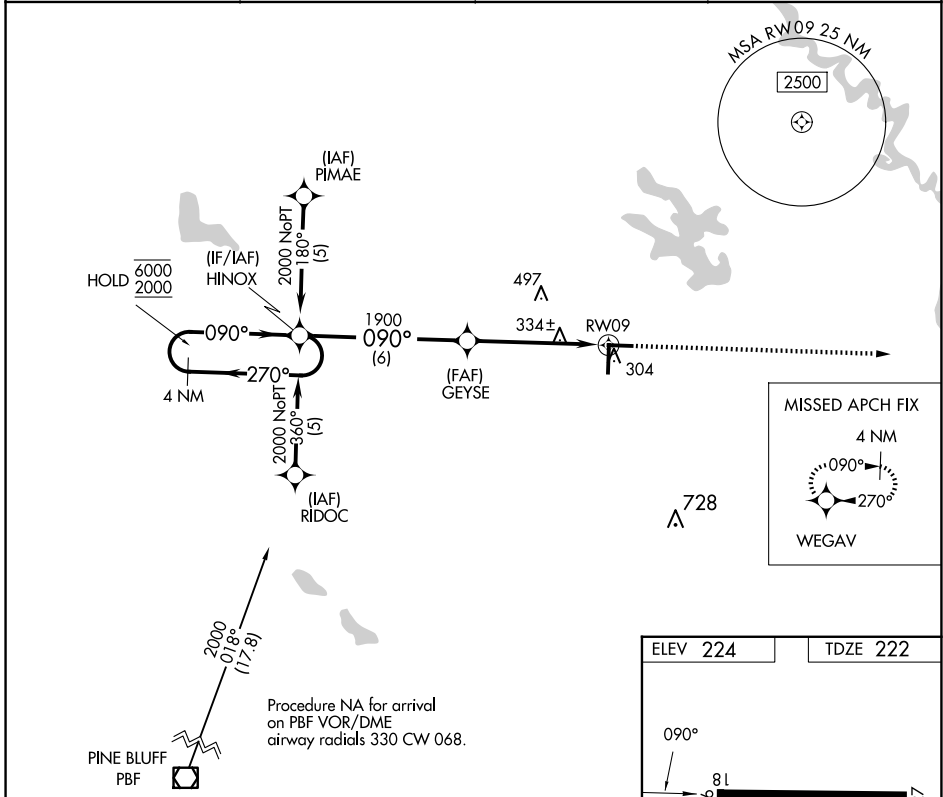
APP CRS	Rwy Idg	5002
090°	TDZE	222
	Apt Elev	224

RNAV (GPS) RWY 9

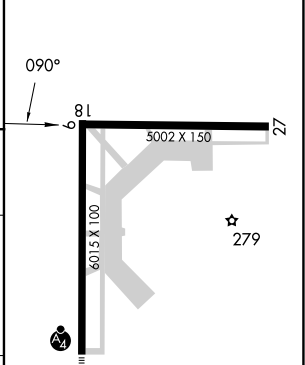
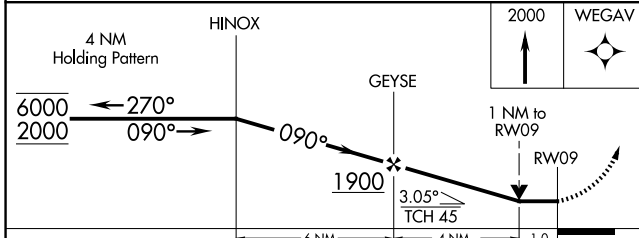
STUTTGART MUNI CARL HUMPHREY FLD (SGT)

RNP APCH - GPS.		MISSED APPROACH: Climb to 2000 direct WEGAV and hold.	
	Rwy 9 helicopter visibility reduction below 3/4 SM NA.		

AWOS-3PT 119.025	LITTLE ROCK APP CON 135.4 353.6	CLNC DEL 123.7	UNICOM 122.8 (CTAF) 0
----------------------------	---	--------------------------	--



ELEV 224	TDZE 222
----------	----------



CATEGORY	A	B	C	D
LNVA MDA	600-1 378 (400-1)			600-1 1/4 378 (400-1 1/4)
CIRCLING	660-1 436 (500-1)	680-1 456 (500-1)	760-1 1/2 536 (600-1 1/2)	860-2 636 (700-2)

MIRL Rwy 18-36 and 9-27 **0**
REIL Rwy 18 and 27 **0**

SC-1, 12 JUN 2025 to 10 JUL 2025

SC-1, 12 JUN 2025 to 10 JUL 2025