

LEWIS THREE DEPARTURE (GRAY3 • GRAY)

FORT LEWIS, WASHINGTON

ATIS 124.65 306.2  
CLNC DEL  
121.9 290.2  
GND CON  
121.9 290.2  
GRAY TOWER ★  
119.325 (CTAF) 256.8  
SEATTLE DEP CON  
120.1 290.9

| Rwy     | Knots    | 60  | 120 | 180  | 240  | 300  | 360  |
|---------|----------|-----|-----|------|------|------|------|
| *33 (a) | V/V(fpm) | 469 | 938 | 1407 | 1876 | 2345 | 2814 |
| †15 (b) | V/V(fpm) | 400 | 800 | 1200 | 1600 | 2000 | 2400 |

AL-413 [USA]

\* Minimum † ATC Climb Rate

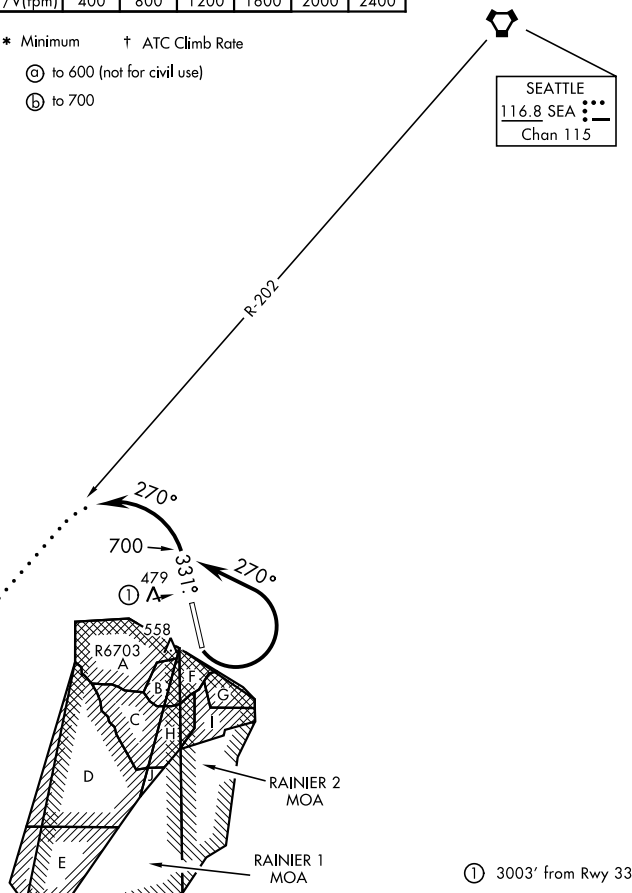
Ⓐ to 600 (not for civil use)

⑥ to 700

SEATTLE  
116.8 SEA ::  
Chan 115

OLYMPIA  
113.4 OLM  
Chan 81  
L-1, H-1

## RADAR REQUIRED



① 3003' from Rwy 33

## DEPARTURE ROUTE DESCRIPTION

TAKE-OFF RWY 15: Turn left as soon as practical (departing 700), thence . . .

TAKE-OFF RWY 33: Climb heading 331° to 700, thence . . .

Turn left (unless otherwise directed by ATC) heading 270° for RADAR vectors to assigned route. Maintain altitude as assigned by ATC. Expect filed altitude within 5 min after departure.

**LOST COMMUNICATIONS:** If no transmissions are received within three minutes after departure, continue climb to assigned altitude, intercept and proceed via SEA VORTAC R-202 to the OLM VORTAC, then via assigned route.

## LEWIS THREE DEPARTURE (GRAY3 • GRAY)

FORT LEWIS, WASHINGTON

GRAY AAF (JOINT BASE LEWIS MCCHORD) (KGRF)