

WICHITA FALLS, TEXAS

HI-TACAN RWY 33L

TACAN SHP Chan 45	APCH CRS 334°	Rwy ldg 13,100 TDZE 1000 Arpt Elev 1019
-------------------	---------------	---

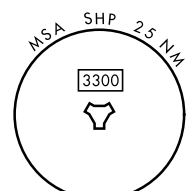
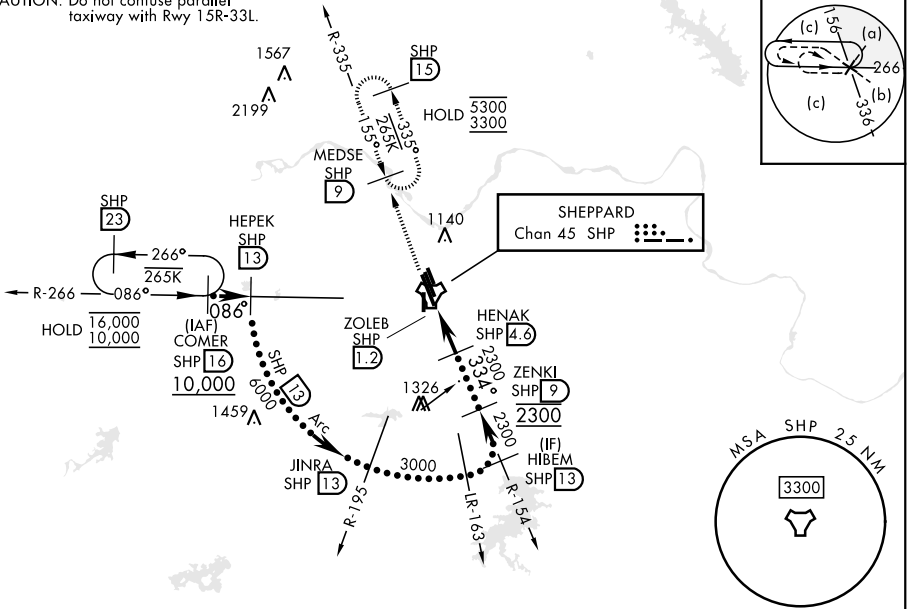
[USAF]

SHEPPARD AFB/WICHITA FALLS MUNI (KSPS)

<p>▼ * When ALS inop, increase CAT CDE vis to 1½ miles. ** Circling not authorized W of Rwy 15R-33L.</p>	<p>MALS R A5</p>	<p>MISSED APPROACH: Climb and maintain 3300, intercept SHP TACAN R-335 to SHP R-335/9 DME (MEDSE) and hold.</p>
--	------------------	---

<p>ATIS* 132.05 269.9</p>	<p>APP CON 118.2 269.025</p>	<p>TOWER* 119.75 0 279.525 (CTAF)</p>	<p>GND CON 125.5 289.4</p>	<p>CLNC DEL 121.2 282.225</p>	<p>ASR</p>
---------------------------	------------------------------	---------------------------------------	----------------------------	-------------------------------	------------

CAUTION: Do not confuse parallel taxiway with Rwy 15R-33L.

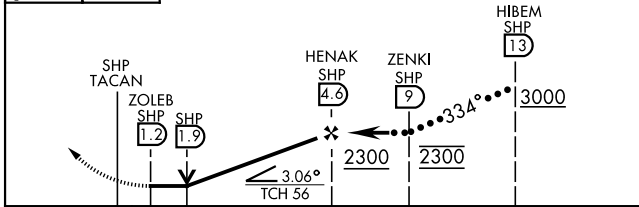


SC-2, 12 JUN 2025 to 10 JUL 2025

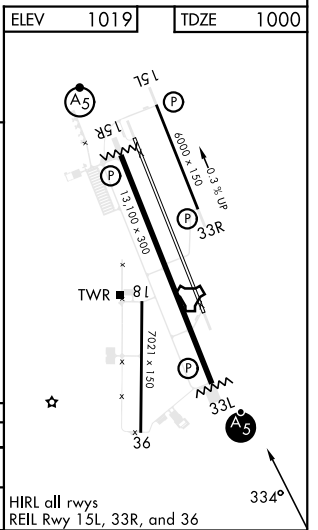
SC-2, 12 JUN 2025 to 10 JUL 2025

EMERG SAFE ALT 100 NM 4600

3300	MEDSE SHP 9	VGSI and descent angles not coincident.
------	-------------	---



CATEGORY	C	D	E
S-33L *	1420-¾	420 (500-¾)	
**CIRCLING	1480-1½ 461 (500-1½)	2100-3	1081 (1100-3)



HIRL all rwys
REIL Rwy 15L, 33R, and 36

WICHITA FALLS, TEXAS

33°59'N-98°30'W

SHEPPARD AFB/WICHITA FALLS MUNI (KSPS)

Amdt 6 23JAN25

HI-TACAN RWY 33L