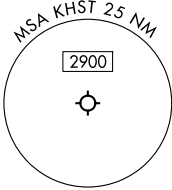


MIAMI DEP CON
125.5 354.1
ATIS ★
132.275 269.9
CLNC DEL
121.75 275.8
GND CON
121.75 275.8
HOMESTEAD TOWER
133.45 279.55

RNAV 1 - DME/DME/IRU or GPS.
RADAR required.

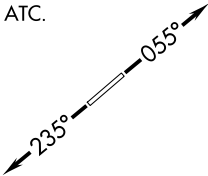
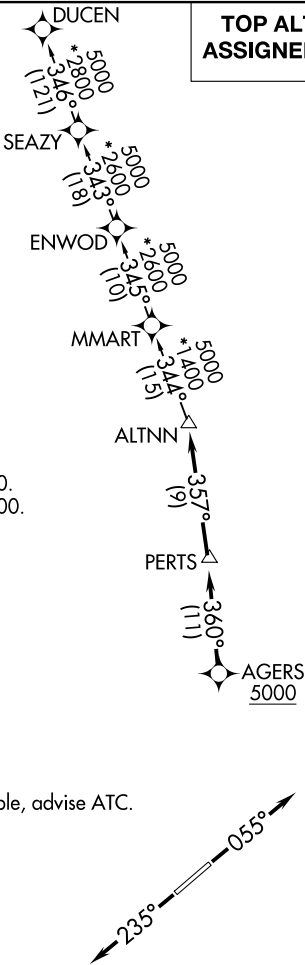
TOP ALTITUDE:
ASSIGNED BY ATC



TAKEOFF MINIMUMS

Rwy 6: Standard with minimum climb of 500’/NM to 1800.
Rwy 24: Standard with minimum climb of 500’/NM to 2200.

NOTE: Jet aircraft only.
NOTE: Accelerate to 250K until leaving 10000, if unable, advise ATC.



NOTE: Chart not to scale.



DEPARTURE ROUTE DESCRIPTION

TAKEOFF RUNWAY 6: Climb on heading 055° or as assigned by ATC for RADAR vectors to cross AGERS at or above 5000, thence. . . .
TAKEOFF RUNWAY 24: Climb on heading 235° or as assigned by ATC for RADAR vectors to cross AGERS at or above 5000, thence. . . .

. . . . on track 360° to PERTS, then on track 357° to ALTNN, then on assigned transition, maintain ATC assigned altitude, expect filed altitude within 10 minutes after departure.

DUCEN TRANSITION (ALTNN2.DUCEN)

SE-3, 12 JUN 2025 to 10 JUL 2025

SE-3, 12 JUN 2025 to 10 JUL 2025