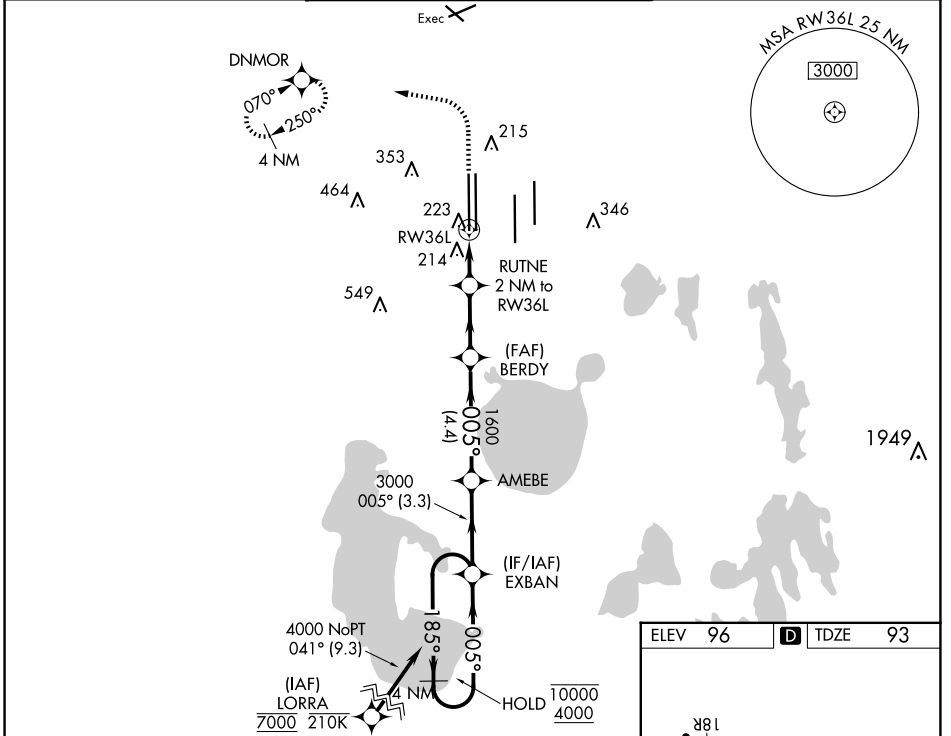


WAAS CH 82313 W36B	APP CRS 005°	Rwy Idg 11621 TDZE 93 Apt Elev 96
--	------------------------	--

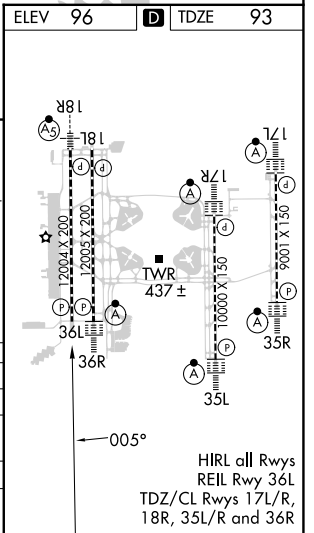
RNAV (GPS) RWY 36L

ORLANDO INTL (MCO)

RNP APCH.		MISSED APPROACH: Climb to 500 then climbing left turn to 3000 direct DNMOR and hold, continue climb-in-hold to 3000.	
▼ Simultaneous approach authorized. LNAV procedure NA during simultaneous operations. Use of FD or AP required during simultaneous operations. For uncompensated Baro-VNAV systems, LNAV/VNAV NA below 1°C or above 54°C.			
D-ATIS ARR 121.25 DEP 120.525	ORLANDO APP CON 124.8 307.0	ORLANDO TOWER 118.45 253.5 (Rwys 17L-35R, 17R-35L) 124.3 253.5 (Rwys 18L-36R, 18R-36L)	GND CON 126.4 (East) 121.8 (West) CLNC DEL 134.7 341.7 CPDLC



500	3000	DNMOR	VGSi and RNAV glidepath not coincident (VGSi Angle 3.00°/TCH 69°)		4 NM Holding Pattern	
BERDY RUTNE 2 NM to RW36L 1600 185° → 10000 ← 005° → 4000 005° → 3000 ← 005° → 1600 GP 3.00° TCH 55		1 NM to RW36L	1 NM	2.6 NM	4.4 NM	3.3 NM
CATEGORY	A	B	C	D		
LPV DA		293/40	200 (200-¾)			
LNAV/VNAV DA		406/45	313 (400-¾)			
LNAV MDA	480/55	387 (400-1)	480/60	387 (400-1½)		
CIRCLING	740-1	644 (700-1)	740-1¾	740-2		
			644 (700-1¾)	644 (700-2)		



SE-3, 12 JUN 2025 to 10 JUL 2025

SE-3, 12 JUN 2025 to 10 JUL 2025