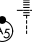


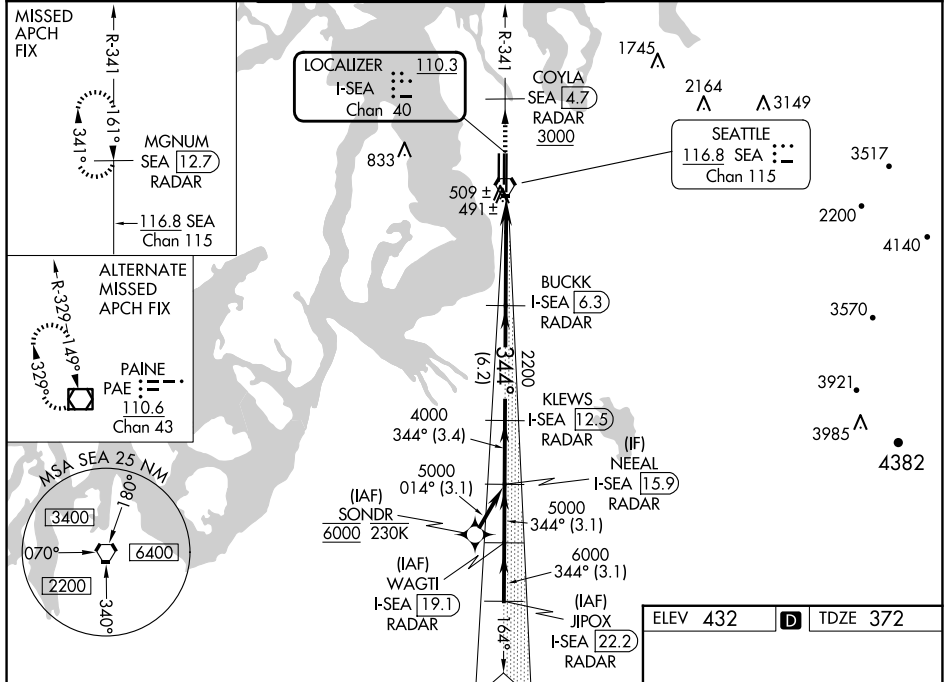
LOC/DME I-SEA 110.3 Chan 40	APP CRS 344°	Rwy Idg TDZE Apt Elev	11901 372 432
---	------------------------	-----------------------------	--

ILS RWY 34R (SA CAT I & II)

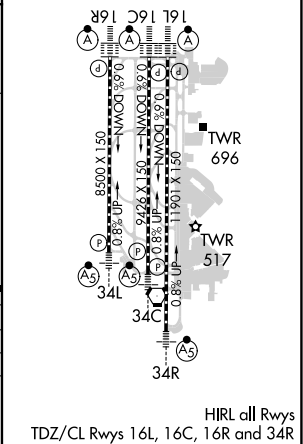
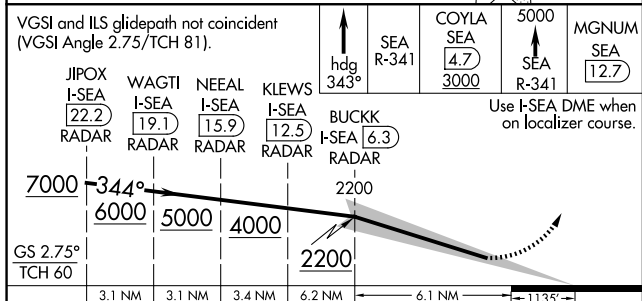
SEATTLE-TACOMA INTL (SEA)

From SONDR: RNAV 1-GPS required. DME or RADAR required.		<p>MALS R</p> 	<p>MISSED APPROACH: Climb on heading 343° and outbound on SEA VORTAC R-341 to cross COYLA/SEA 4.7 DME/RADAR at or above 3000 then climb to 5000 on SEA VORTAC R-341 to MGNUM/SEA 12.7 DME/RADAR and hold, continue climb-in-hold to 5000.</p>		
<p>Simultaneous approach authorized with Rwy 34L. SA CAT I: Requires specific OPSPEC, MSPEC, or LOA approval and use of HUD to DH. SA CAT II: Reduced lighting: Requires specific OPSPEC, MSPEC, or LOA approval and use of autoland or HUD to touchdown.</p>					

D-ATIS 118.0	SEATTLE APP CON 133.65 273.45	SEATTLE TOWER. 119.9 239.3 (Rwys 16L, 16C, 34C, 34R) 120.95 239.3 (Rwys 16R, 34L)		GND CON 121.7	CLNC DEL 128.0	CPDLC
------------------------	---	---	--	-------------------------	--------------------------	-------



ELEV 432	D	TDZE 372
----------	---	----------



CATEGORY	A	B	C	D
S-ILS 34R	SA CAT I RA 250/14 150 DA 522			
S-ILS 34R	SA CAT II RA 200/12 100 DA 472			

SA CATEGORY I & II ILS - SPECIAL AIRCREW & AIRCRAFT CERTIFICATION REQUIRED

HIRL all Rwys
TDZ/CL Rwys 16L, 16C, 16R and 34R

NW-1, 12 JUN 2025 to 10 JUL 2025