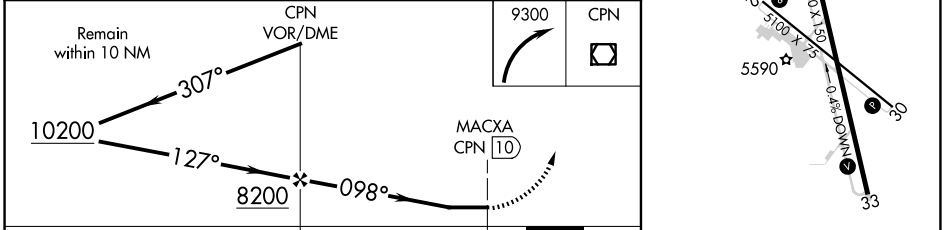
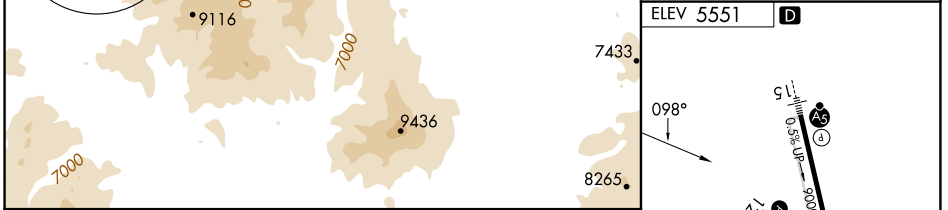
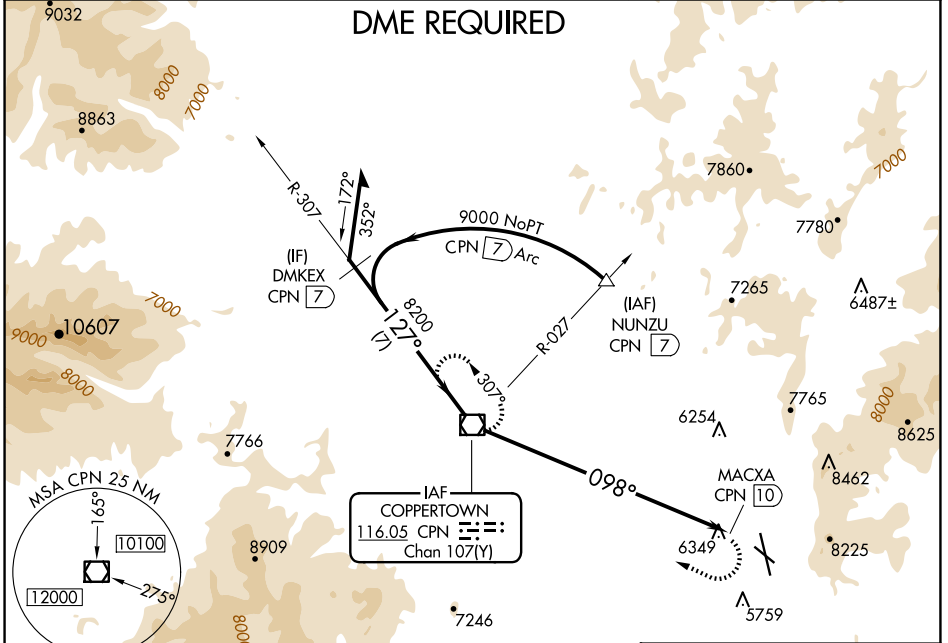


VOR/DME CPN <b>116.05</b> Chan <b>107(Y)</b>	APP CRS <b>098°</b>	Rwy Ldg TDZE Apt Elev <b>5551</b>	N/A N/A 5551
--	------------------------	--------------------------------------	--------------------

**VOR-A**  
BERT MOONEY (BTM)

<b>⚠</b> <b>⚠</b> -24°C	DME required. Circling NA northeast of Rwy 15-33.	MISSED APPROACH: Climbing right turn to 9300 direct CPN VOR/DME and hold.
----------------------------	--	---

ASOS <b>135.175</b>	SALT LAKE CENTER <b>132.4 338.3</b>	UNICOM <b>123.0(CTAF)</b> <b>Ⓛ</b>
------------------------	--	---------------------------------------



CATEGORY	A	B	C	D
<b>Ⓛ</b> CIRCLING	7120-1¼ 1569 (1600-1¼)	7120-1½ 1569 (1600-1½)	7120-3 1569 (1600-3)	7140-3 1589 (1600-3)

REIL Rwy 12 and 30 **Ⓛ**  
MIRL Rwy 12-30 and 15-33 **Ⓛ**

NW-1, 12 JUN 2025 to 10 JUL 2025

NW-1, 12 JUN 2025 to 10 JUL 2025