

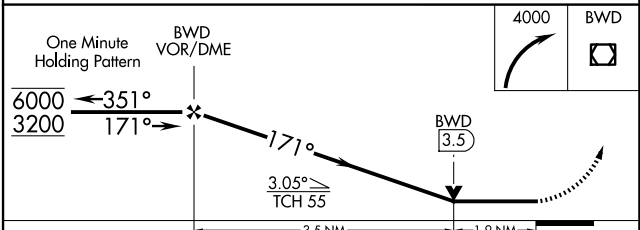
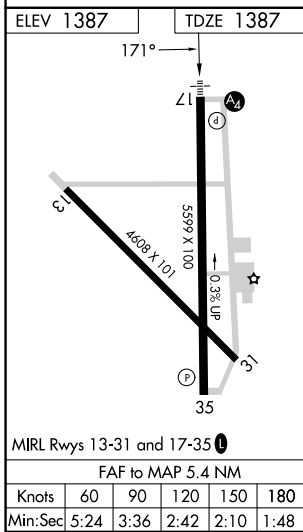
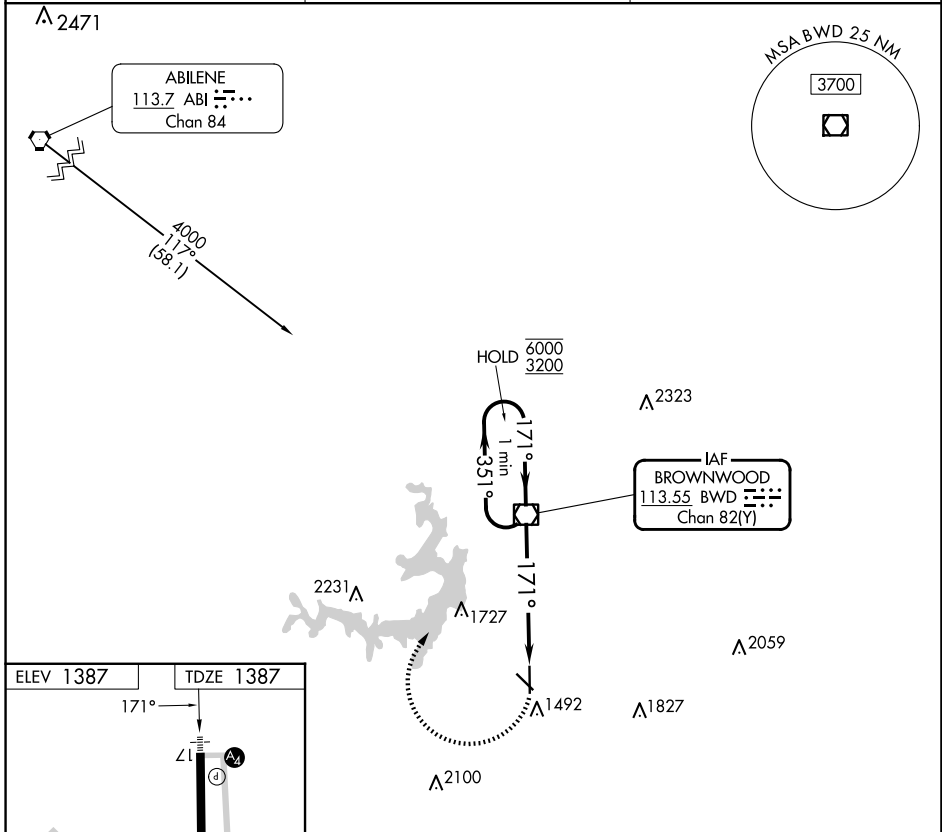
VOR/DME BWD 113.55 Chan 82 (Y)	APP CRS 171°	Rwy Idg TDZE 1387 Apt Elev 1387
--	------------------------	---

VOR RWY 17

BROWNWOOD RGNL (BWD)

<p>⚠ Rwy 17 helicopter visibility reduction below $\frac{3}{4}$ SM NA. For inop ALS, increase VOR Cat A and D visibility to $\frac{1}{8}$ SM.</p>	<p>MALS </p>	<p>MISSED APPROACH: Climbing right turn to 4000 direct BWD VOR/DME and hold, continue climb-in-hold to 4000.</p>
--	--------------	--

AWOS-3 118.325	FORT WORTH CENTER 127.45 290.3	UNICOM 122.8 (CTAF)
--------------------------	--	-------------------------------



CATEGORY	A	B	C	D
S-17	2060- $\frac{3}{4}$	673 (700- $\frac{3}{4}$)	2060- $\frac{1}{4}$	673 (700- $\frac{1}{4}$)
CIRCLING	2060-1	673 (700-1)	2060-2 673 (700-2)	2160- $\frac{1}{2}$ 773 (800- $\frac{1}{2}$)

SC-3, 12 JUN 2025 to 10 JUL 2025

SC-3, 12 JUN 2025 to 10 JUL 2025