


LOC/DME I-BKX 111.35 Chan 50(Y)	APP CRS 116°	Rwy Idg 6000 TDZE 1621 Apt Elev 1648
---	------------------------	---

ILS or LOC RWY 12

BROOKINGS RGNL (BKX)

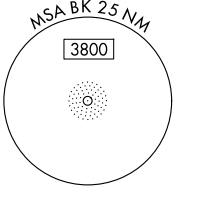
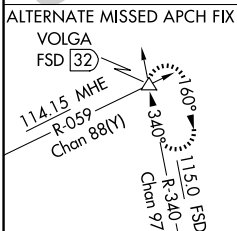
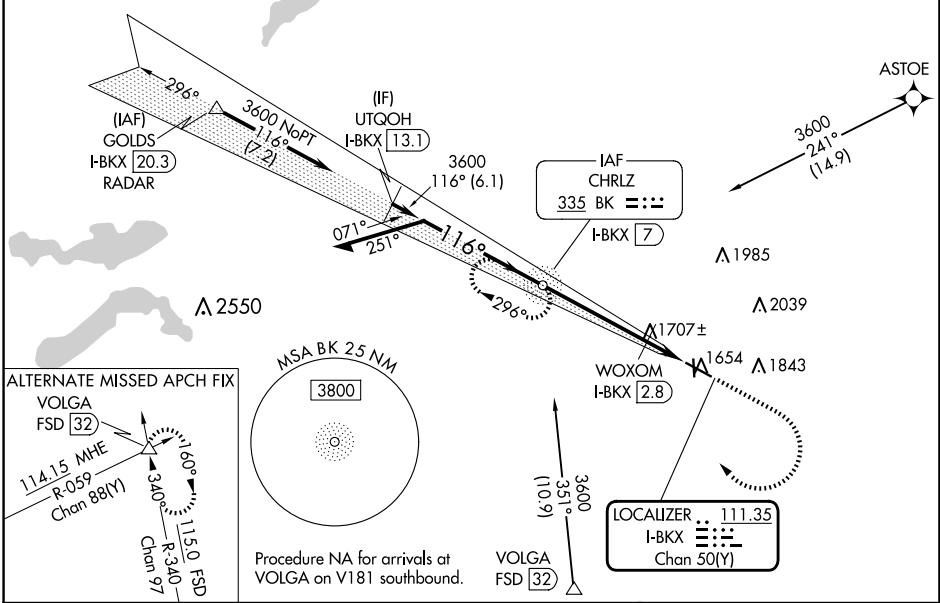
DME required. ADF required. From ASTOE: RNAV 1-GPS required.

NA Circling Rwy 17 NA at night. VDP NA when using Pipestone Muni altimeter setting. For inop ALS, increase S-LOC 12 Cats C/D visibility to 1 3/8 SM. For inop ALS when using WOXOM fix minimums, increase S-LOC 12 Cat C/D visibility to 1 SM.

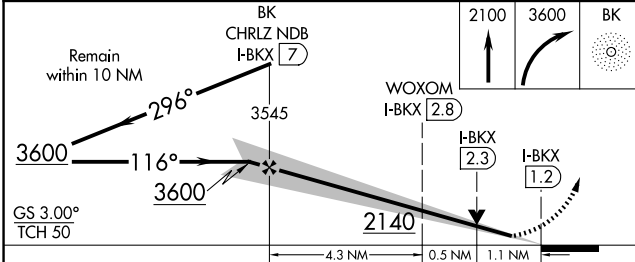
MALSR 

MISSED APPROACH: Climb to 2100 then climbing right turn to 3600 direct BK NDB and hold, continue climb-in hold to 3600.

AWOS-3PT 119.925	MINNEAPOLIS CENTER 132.05 317.4	GCO 121.725	UNICOM 123.0 (CTAF)
----------------------------	---	-----------------------	-------------------------------

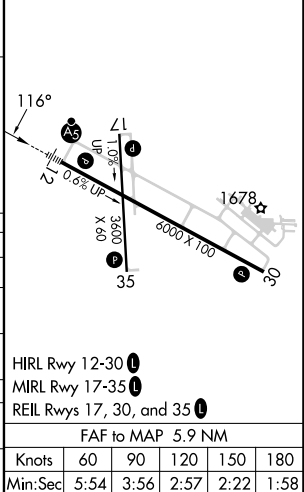


Procedure NA for arrivals at VOLGA on V181 southbound.



ELEV 1648	D TDZE 1621
-----------	--------------------

CATEGORY	A	B	C	D
S-ILS 12		1821-1/2	200 (200-1/2)	
S-LOC 12	2140-1/2	519 (500-1/2)	2140-1	519 (500-1)
C CIRCLING	2140-1 492 (500-1)	2160-1 512 (600-1)	2340-2 692 (700-2)	2340-2 1/4 692 (700-2 1/4)
WOXOM FIX MINIMUMS				
S-LOC 12	2000-1/2	379 (400-1/2)	2000-5/8	379 (400-5/8)
C CIRCLING	2140-1 492 (500-1)	2160-1 512 (600-1)	2340-2 692 (700-2)	2340-2 1/4 692 (700-2 1/4)



HIRL Rwy 12-30 **L**
MIRL Rwy 17-35 **L**
REIL Rws 17, 30, and 35 **L**

FAF to MAP 5.9 NM

Knots	60	90	120	150	180
Min:Sec	5:54	3:56	2:57	2:22	1:58

NC-1, 12 JUN 2025 to 10 JUL 2025

NC-1, 12 JUN 2025 to 10 JUL 2025