

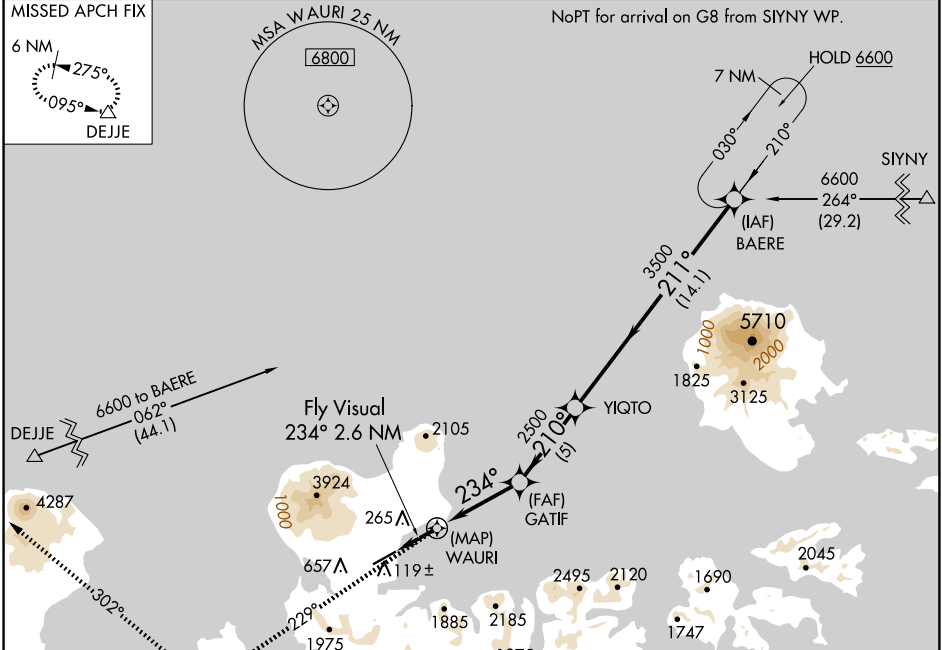
# RNAV (GPS) RWY 23

ADAK (ADK)(PADK)

APP CRS	Rwy Idg	<b>6190</b>
<b>234°</b>	TDZE	<b>17</b>
	Apt Elev	<b>20</b>

RNP APCH-GPS.	MALS	MISSED APPROACH: Climb to 6600 on course 229° to XERIC, and right turn on course 302° to DEJJE and hold.
Circling not authorized at night. Circling NA northwest of Rwy 5-23.		

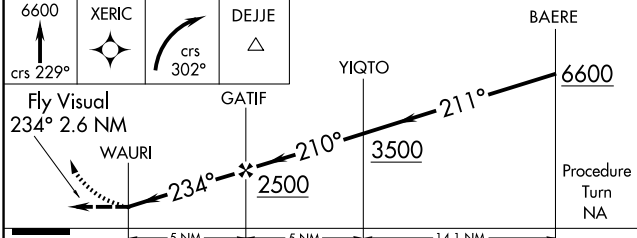
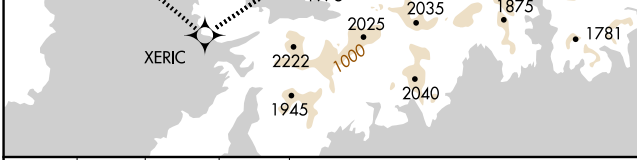
AWOS-3P <b>134.5</b>	ANCHORAGE CENTER <b>126.4 254.3</b>	CTAF <b>122.9</b>
-------------------------	--	----------------------



AK, 12 JUN 2025 to 07 AUG 2025

AK, 12 JUN 2025 to 07 AUG 2025

ELEV 20		TDZE 17
---------	--	---------



CATEGORY	A	B	C	D
LNAV MDA	1220-3 1203 (1200-3)			
CIRCLING	1220-3	1200 (1200-3)	NA	

