

Minimum Climb Rate to 800

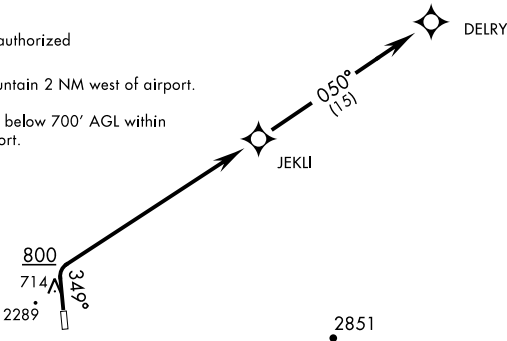
MILITARY CERTIFIED
AIRCREW OR AUTHORIZED
CONTRACT AIRCRAFT ONLY

NOT FOR CIVIL USE

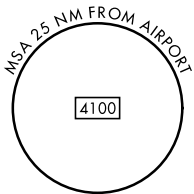
Night operations not authorized

CAUTION: 2289' mountain 2 NM west of airport.

Uncontrolled airspace below 700' AGL within
7 NM of Tin City airport.



WARNING: High terrain within 2 NM of departure end of runway
requiring prompt compliance with departure procedure instructions;
do not delay start of initial turn.



DEPARTURE ROUTE DESCRIPTION

TAKEOFF RWY 17: NA

TAKEOFF RWY 35: Climb heading 349° to 800, then right turn direct JEKLI,
then track 050° to DELRY. Maintain 7000 or ATC assigned altitude.

AK, 12 JUN 2025 to 07 AUG 2025

AK, 12 JUN 2025 to 07 AUG 2025