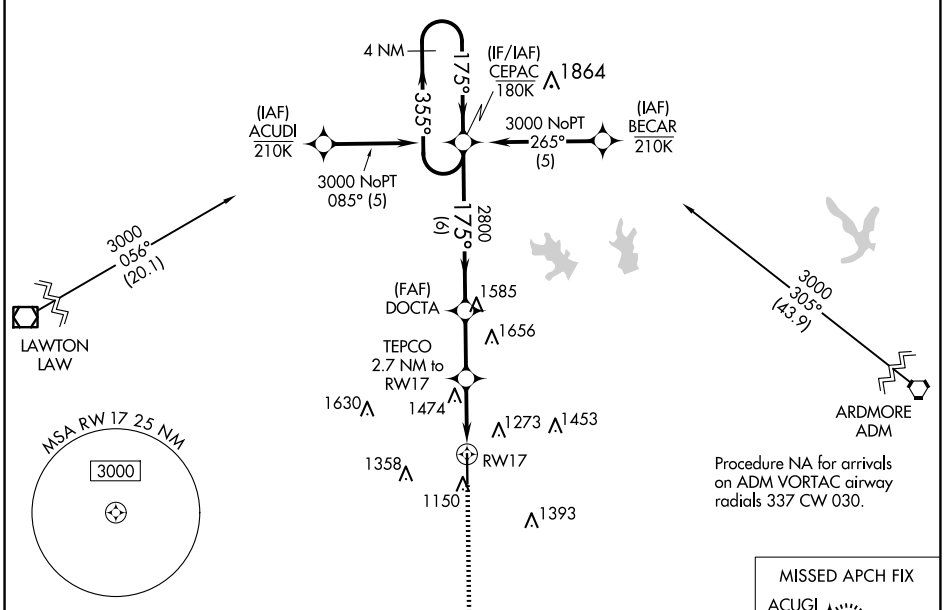


WAAS CH 93619 W17A	APP CRS 175°	Rwy Idg 6325 TDZE 1114 Apt Elev 1114
--	------------------------	---

RNAV (GPS) RWY 17

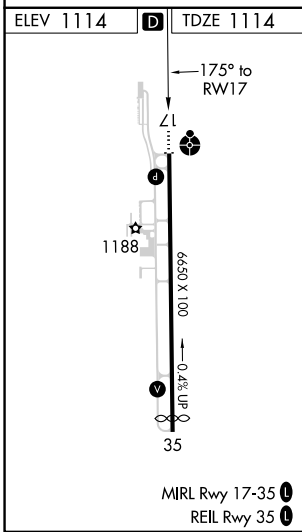
HALLIBURTON FLD (DUC)

RNP APCH. ▼ For uncompensated Baro-VNAV systems, LNAV/VNAV NA below -17°C or above 54°C. Inop table does not apply to LPV all Cats, LNAV/VNAV all Cats, LNAV Cats C/D.		ODALS 	MISSED APPROACH: Climb to 3000 direct ACUGI and hold.
AWOS-3 119.075	FORT SILL APP CON 118.6 290.375	CLNC DEL 118.4	UNICOM 122.8 (CTAF) 0



SC-1, 12 JUN 2025 to 10 JUL 2025

SC-1, 12 JUN 2025 to 10 JUL 2025



MISSED APCH FIX ACUGI 				
3000 ACUGI 	CEPAC 4 NM Holding Pattern 			
*LNAV only. RWY 17 *1.8 NM to RWY 17 TEPCO 2.7 NM to RWY 17 DOCTA 2800 *2020 1.8 NM 0.9 NM 2.4 NM 6 NM	355° → 3000 ← 175° 175° 2800 GP 3.00° TCH 53			
CATEGORY LPV DA LNAV/VNAV DA LNAV MDA CIRCLING	A 1314-3/4 1806-2 1/2 1740-3/4 626 (700-3/4) 1740-1 626 (700-1)	B 200 (200-3/4) 692 (700-2/2) 1740-1 3/4 626 (700-1 3/4) 626 (700-1)	C 200 (200-3/4) 692 (700-2/2) 1740-1 3/4 626 (700-1 3/4) 1780-1 3/4 666 (700-1 3/4)	D 1780-2 666 (700-2)