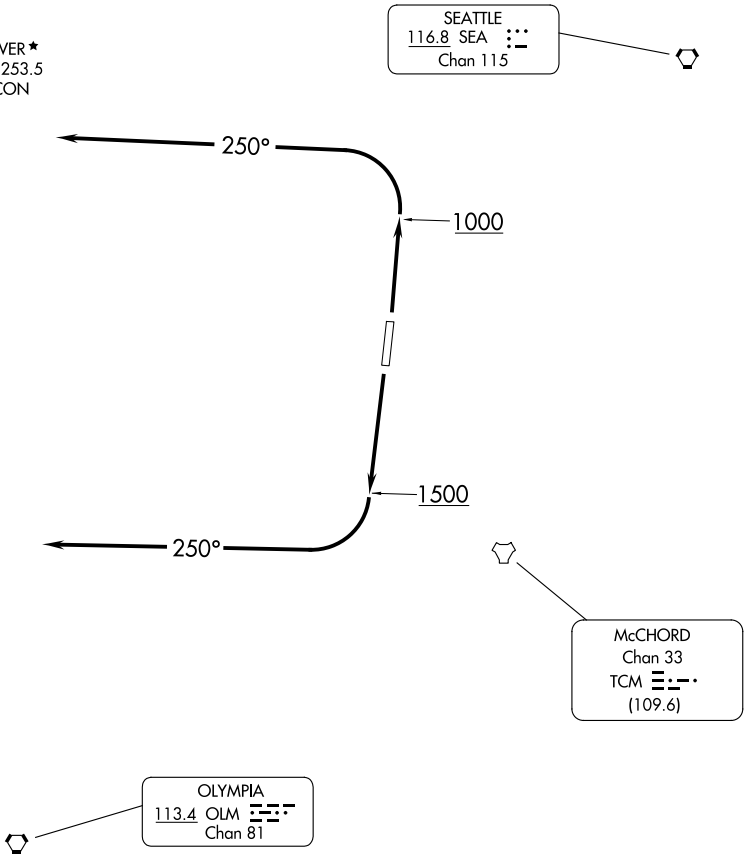


ATIS
124.05
GND CON
121.8
TACOMA TOWER ★
118.5 (CTAF) 253.5
SEATTLE DEP CON
120.1 290.9



NOTE: Chart not to scale.



DEPARTURE ROUTE DESCRIPTION

TAKEOFF RUNWAY 17: Climb runway heading until leaving 1500, turn right heading 250°, maintain 2000. Expect filed altitude 5 minutes after departure. Expect RADAR vectors to assigned route

TAKEOFF RUNWAY 35: Climb runway heading until leaving 1000, turn left heading 250°, maintain 2000. Expect filed altitude 5 minutes after departure. Expect RADAR vectors to assigned route.

LOST COMMUNICATIONS: If no transmissions are received for 3 minutes after departure, climb to filed altitude direct SEA VORTAC, thence via assigned route.