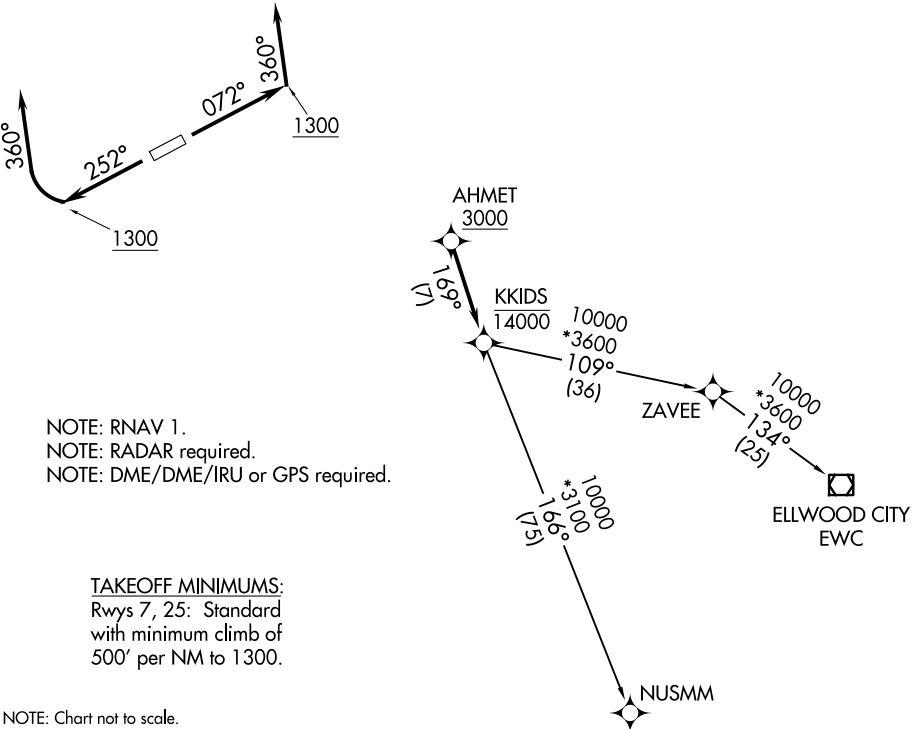


ASOS  
118.925  
CLNC DEL  
125.7  
CTAF  
122.7  
CLEVELAND DEP CON  
125.35 346.325

TOP ALTITUDE:  
ASSIGNED BY ATC



DEPARTURE ROUTE DESCRIPTION

TAKEOFF RUNWAY 7: Climb on heading 072° to 1300, then on heading 360° or as assigned by ATC for RADAR vectors to cross AHMET at or above 3000, thence....

TAKEOFF RUNWAY 25: Climb on heading 252° to 1300, then right turn on heading 360° or as assigned by ATC for RADAR vectors to cross AHMET at or above 3000, thence....

....on track 169° to cross KKIDS at or below 14000, then on (transition).  
Maintain altitude assigned by ATC, expect filed altitude ten minutes after departure.

ELLWOOD CITY TRANSITION (AHMET4.EWC)  
NUSMM TRANSITION (AHMET4.NUSMM)