

(INDIE8.INDIE) 21280

AL-5752 (FAA)

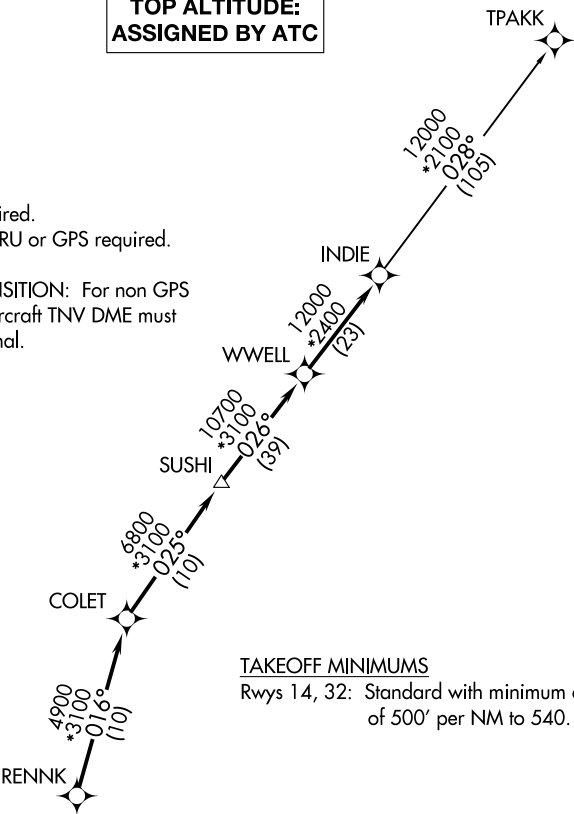
INDIE EIGHT DEPARTURE (RNAV)

BAYTOWN (HPY)  
BAYTOWN, TEXAS

CTAF  
122.8  
HOUSTON DEP CON  
134.45 284.0

TOP ALTITUDE:  
ASSIGNED BY ATC

- NOTE: RADAR required.  
NOTE: DME/DME/IRU or GPS required.  
NOTE: RNAV 1.  
NOTE: TPAKK TRANSITION: For non GPS  
equipped aircraft TNV DME must  
be operational.



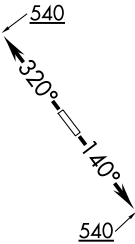
TAKEOFF MINIMUMS  
Rwys 14, 32: Standard with minimum climb  
of 500' per NM to 540.

DEPARTURE ROUTE DESCRIPTION

TAKEOFF RUNWAY 14: Climb on heading 140° to 540 for RADAR vectors to RENNK, thence . . .  
TAKEOFF RUNWAY 32: Climb on heading 320° to 540 for RADAR vectors to RENNK, thence . . .

. . . on track 016° to COLET, then on track 025° to SUSHI, then on track 026° to WWELL, then on track 026° to INDIE, then on (transition). Maintain ATC assigned altitude. Expect filed altitude 10 minutes after departure.

TPAKK TRANSITION (INDIE8.TPAKK)



NOTE: Chart not to scale.

INDIE EIGHT DEPARTURE (RNAV)  
(INDIE8.INDIE) 07OCT21

BAYTOWN, TEXAS  
BAYTOWN (HPY)

SC-5, 12 JUN 2025 to 10 JUL 2025

SC-5, 12 JUN 2025 to 10 JUL 2025