

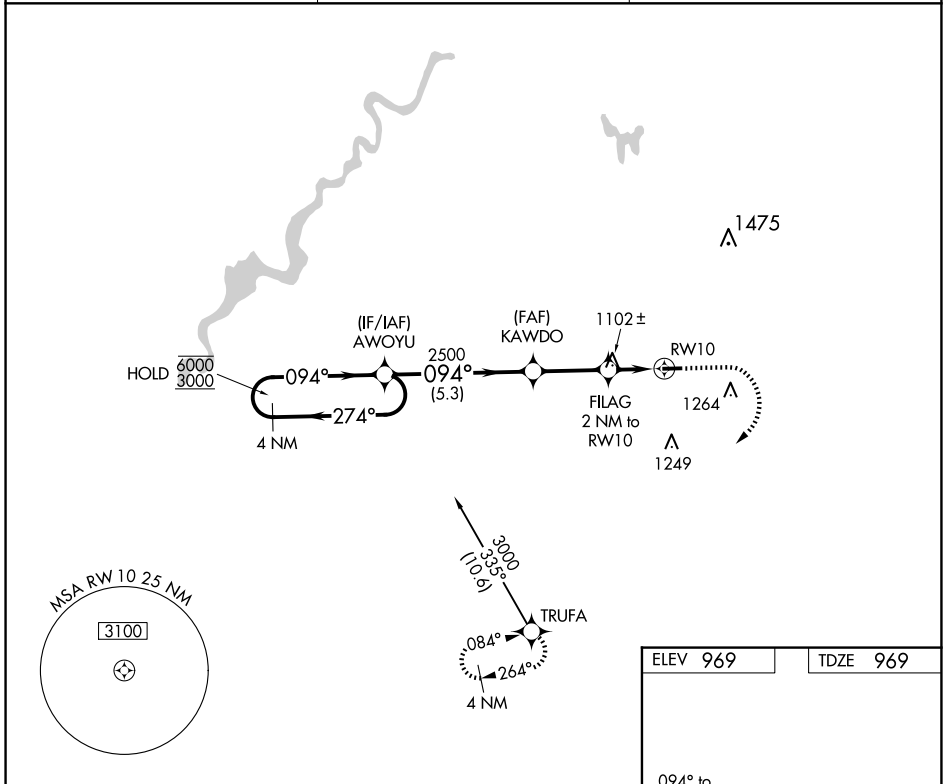
APP CRS	Rwy Idg	3499
094°	TDZE	969
	Apt Elev	969

RNAV (GPS) RWY 10

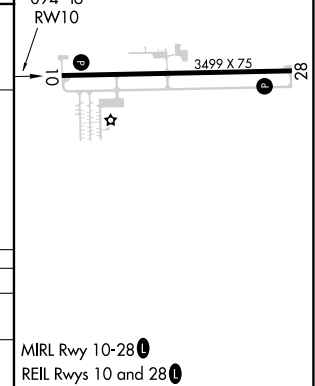
LAKEVIEW/GRIFFITH FLD (13C)

RNP APCH.	Procedure NA at night. Rwy 10 helicopter visibility reduction below 1 SM NA. Use Big Rapids altimeter setting.	MISSED APPROACH: Climb to 1800 then climbing right turn to 3000 direct TRUFA and hold.
NA		

RQB AWOS-3P 125.875	GREAT LAKES APP CON * 124.6 257.6	UNICOM 122.8 (CTAF)
-------------------------------	---	-------------------------------



4 NM Holding Pattern AWOYU	Visual Segment - Obstacles.			1800	3000	TRUFA
	KAWDO 2500	FLAG 2 NM to RW10 1640	RW10			
	5.3 NM	2.7 NM	2 NM			
CATEGORY	A	B	C	D		
LNVA MDA	1400-1	431 (500-1)	NA			
CIRCLING	1480-1 511 (600-1)	1580-1 611 (700-1)	NA			



EC-1, 12 JUN 2025 to 10 JUL 2025

EC-1, 12 JUN 2025 to 10 JUL 2025