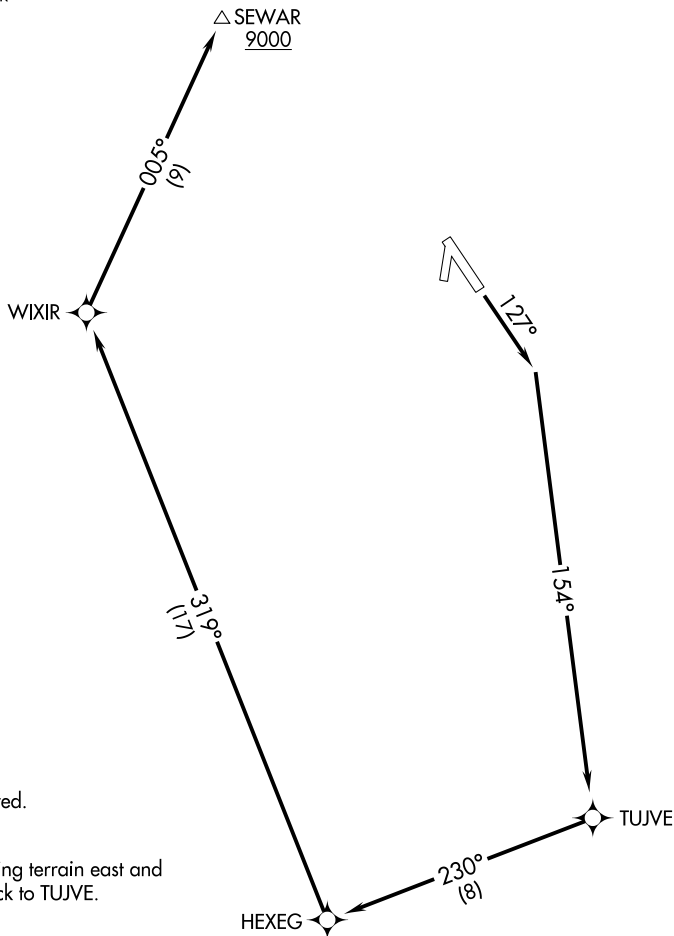


SEWAR ONE DEPARTURE (OBSTACLE) (RNAV)

SEWARD (SWD)(PAWD)
AL-10600 (FAA) SEWARD, ALASKA

ANCHORAGE CENTER
119.7 269.0
KENAI RADIO
122.6
CTAF
122.9

△ SEWAR
9000



NOTE: GPS required.

NOTE: RNAV 1.

NOTE: Rapidly rising terrain east and west of track to TUJVE.

TAKEOFF MINIMUMS

Rwy 31, 34, 16: NA- Terrain.

Rwy 13: Standard with minimum climb of 490' per NM to 2700.

TAKEOFF OBSTACLE NOTES

Rwy 13: Terrain beginning 49' from DER, 14' left of centerline, up to 36' MSL.

Terrain beginning 135' from DER, 142' right of centerline, up to 23' MSL.

NOTE: Chart not to scale.

DEPARTURE ROUTE DESCRIPTION

TAKEOFF RUNWAY 13: Climb to 9000 on heading 127° to intercept course 154° to TUJVE, and on track 230° to HEXEG, and on track 319° to WIXIR, and on track 005° to SEWAR before proceeding on course.

SEWAR ONE DEPARTURE (OBSTACLE) (RNAV)
(SEWAR1.SEWAR) 30JUN11SEWARD, ALASKA
SEWARD (SWD)(PAWD)

AK, 12 JUN 2025 to 07 AUG 2025