

APP CRS <b>228°</b>	Rwy Idg TDZE Apt Elev	<b>N/A</b> <b>N/A</b> <b>454</b>
------------------------	-----------------------------	--

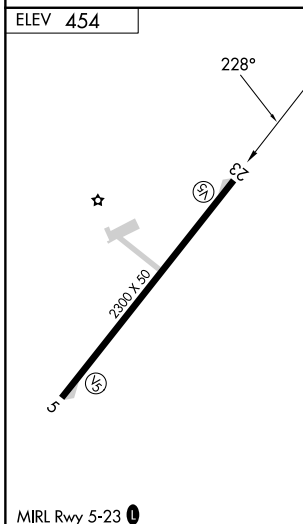
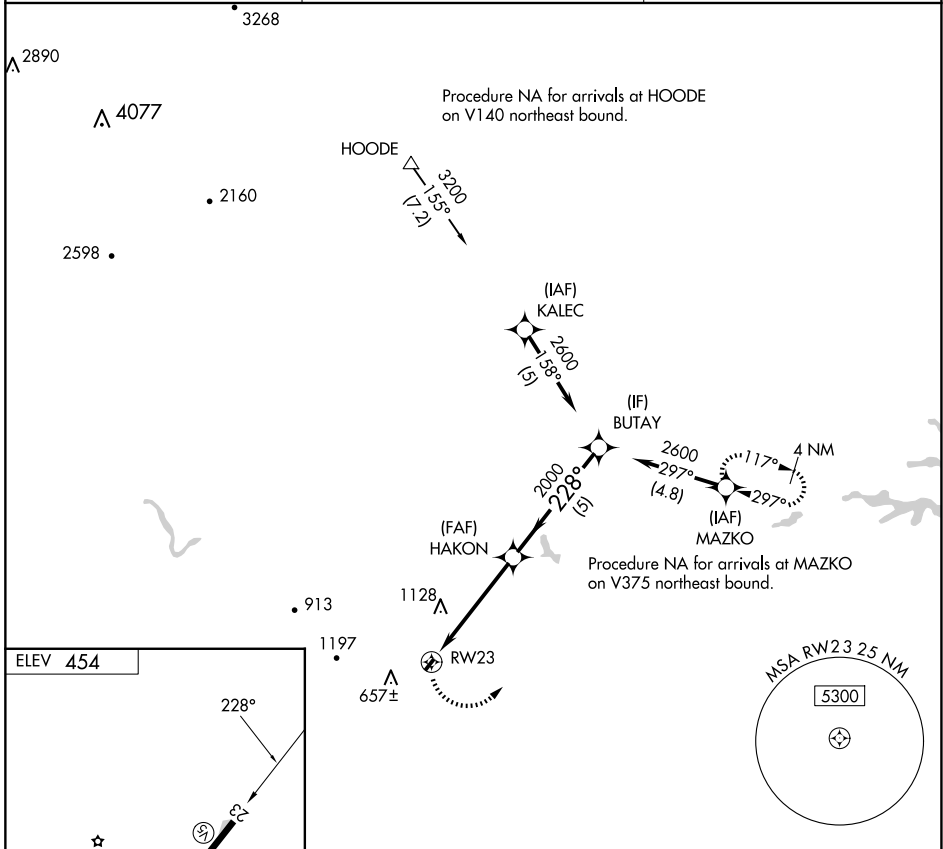
# RNAV (GPS)-B

GORDONSVILLE MUNI (GVE)

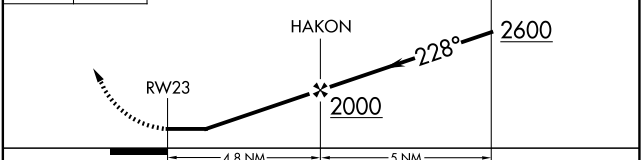
**▽** When local altimeter setting not received, use Orange County altimeter setting and increase all MDA 20 ft. DME/DME RNP-0.3 NA. Procedure NA at night.  
**△ NA** Helicopter visibility reduction below 1 SM NA.

MISSED APPROACH: Climbing left turn to 3000 direct MAZKO and hold.

AWOS-3 <b>120.225</b>	POTOMAC APP CON <b>132.85 323.125</b>	UNICOM <b>123.0 (CTAF) 0</b>
--------------------------	--	---------------------------------



3000 MAZKO Visual Segment - Obstacles.



CATEGORY	A	B	C	D
<b>C</b> CIRCLING	1520-3	1066 (1100-3)	NA	

NE-3, 12 JUN 2025 to 10 JUL 2025

NE-3, 12 JUN 2025 to 10 JUL 2025