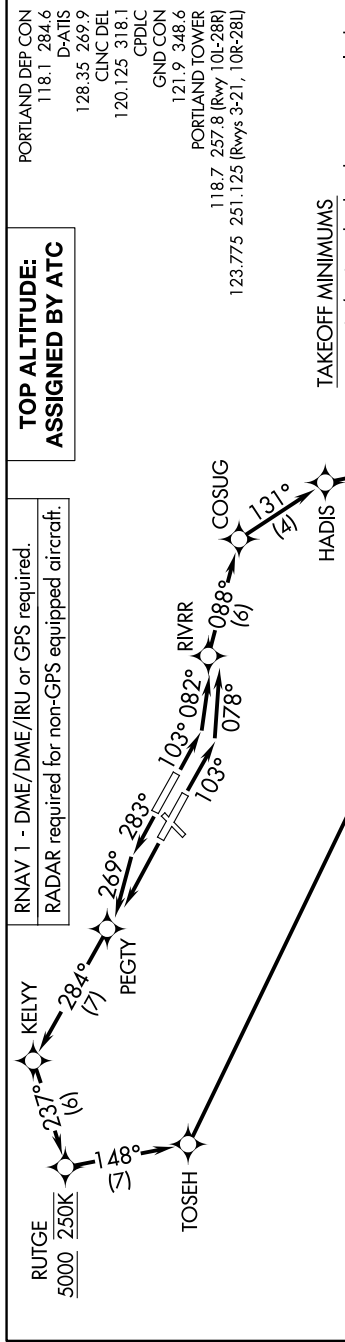


CASCADE FOUR DEPARTURE (RNAV)

AL-330 (FAA)

PORTLAND INTL (PDX)
PORTLAND, OREGON

NW-1, 10 JUL 2025 to 07 AUG 2025



▼ DEPARTURE ROUTE DESCRIPTION

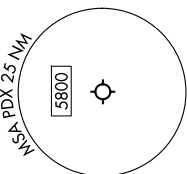
TAKEOFF RUNWAY 10L: Climb on heading 103° to intercept course 082° to RIVRR, then on depicted route to cross CHISM at or above 10100, thence...

TAKEOFF RUNWAY 10R: Climb on heading 103° to intercept course 078° to RIVRR, then on depicted route to cross CHISM at or above 10100, thence...

TAKEOFF RUNWAY 28L: Climb direct PEGTY, then on depicted route to cross CHISM at or above 10100, thence...

TAKEOFF RUNWAY 28R: Climb on heading 283° to intercept course 269° to PEGTY, then on depicted route to cross CHISM at or above 10100, thence... on transition, maintain ATC assigned altitude. Expect filed altitude 10 minutes after departure.

DESCHUTES TRANSITION (CASCD4.DSD)
JUDAH TRANSITION (CASCD4.JUDAH)
PUHTS TRANSITION (CASCD4.PUHTS)
SYNKR TRANSITION (CASCD4.SYNKR)



NOTE: Jet aircraft only.
NOTE: Chart not to scale.

NW-1, 10 JUL 2025 to 07 AUG 2025

CASCADE FOUR DEPARTURE (RNAV)