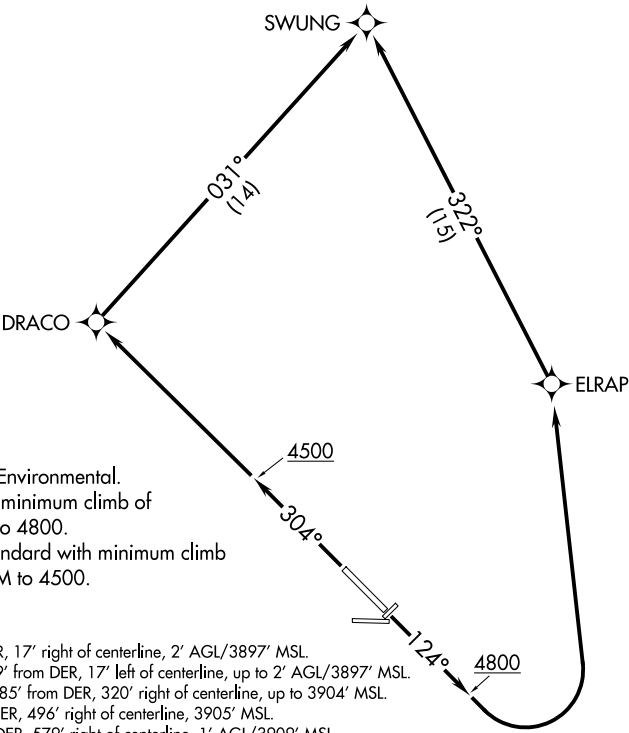


AWOS-3
118.325
GCO
121.725
ELLSWORTH DEP CON
119.5 259.1
UNICOM
122.7 (CTAF)



NOTE: RNAV 1.
NOTE: GPS required.

TAKEOFF MINIMUMS
Rwys 4, 8, 22, 26: NA-Environmental.
Rwy 13: Standard with minimum climb of 380' per NM to 4800.
Rwy 31: 300-1¾ or standard with minimum climb of 350' per NM to 4500.

TAKEOFF OBSTACLE NOTES
Rwy 13: Lighting 9' from DER, 17' right of centerline, 2' AGL/3897' MSL.
Lighting beginning 9' from DER, 17' left of centerline, up to 2' AGL/3897' MSL.
Terrain beginning 185' from DER, 320' right of centerline, up to 3904' MSL.
Terrain 338' from DER, 496' right of centerline, 3905' MSL.
Lighting 487' from DER, 579' right of centerline, 1' AGL/3909' MSL.
Terrain 562' from DER, 628' right of centerline, 3911' MSL.
Vehicle on traverse way 1071' from DER, 480' right of centerline, 3931' MSL.
Rwy 31: Lighting 9' from DER, 18' left of centerline, 2' AGL/3886' MSL.
Lighting 9' from DER, 17' right of centerline, 2' AGL/3886' MSL.
Terrain beginning 53' from DER, 356' left of centerline, up to 3918' MSL.
Terrain 142' from DER, 394' right of centerline, 3897' MSL.
Terrain 192' from DER, 492' right of centerline, 3902' MSL.
Terrain beginning 328' from DER, 395' right of centerline, up to 3907' MSL.
Terrain beginning 346' from DER, 450' left of centerline, up to 3929' MSL.
Terrain 592' from DER, 641' left of centerline, 3942' MSL.
Pole, terrain beginning 734 from DER, 446' left of centerline, up to 9' AGL/3986' MSL.
Tree 1.1 NM from DER, 2402' right of centerline, 4084' MSL.
Trees, vehicle on traverse way beginning 1.2 NM from DER, 1993' right of centerline, up to 4112' MSL.
Trees, terrain, vehicle on traverse way beginning 1.2 NM from DER, 1883' right of centerline, up to 4126' MSL.
Terrain, trees beginning 1.2 NM from DER, 1786' right of centerline, up to 4155' MSL.
Vehicle on traverse way 1.3 NM from DER, 2624' right of centerline, 4217' MSL.
Trees, terrain beginning 1.3 NM from DER, 744' right of centerline, up to 4228' MSL.

NOTE: Chart not to scale.

DEPARTURE ROUTE DESCRIPTION

TAKEOFF RUNWAY 13: Climb heading 124° to 4800, then left turn direct ELRAP, then on track 322° to SWUNG, thence. . . .
TAKEOFF RUNWAY 31: Climb heading 304° to 4500, then direct DRACO, then on track 031° to SWUNG, thence. . . .
. . . .on assigned route and altitude.

NC-1, 10 JUL 2025 to 07 AUG 2025

NC-1, 10 JUL 2025 to 07 AUG 2025