

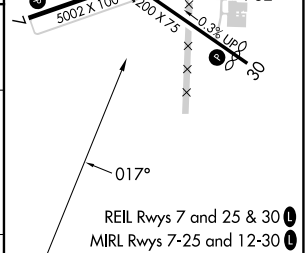
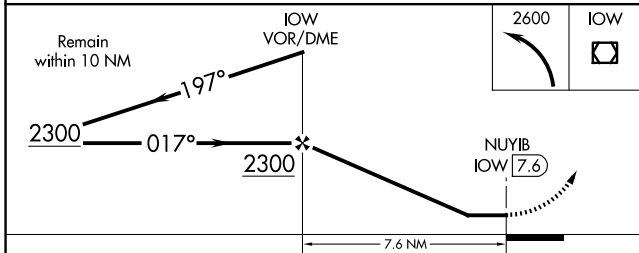
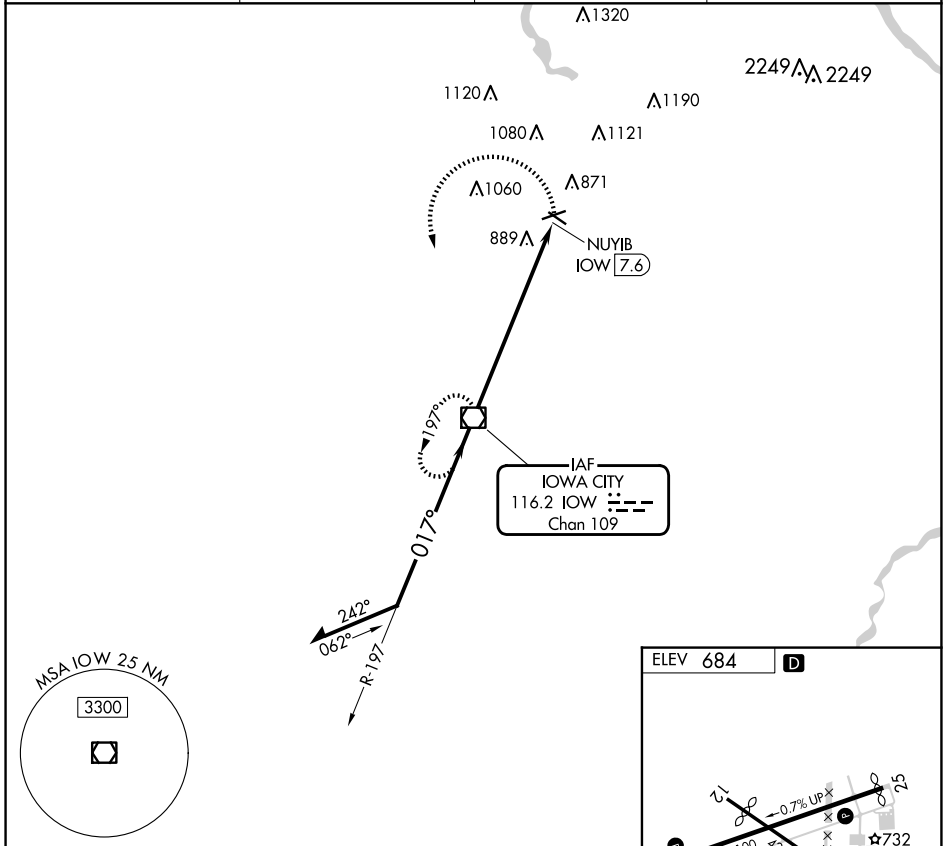
VOR/DME IOW 116.2 Chan 109	APP CRS 017°	Rwy Idg TDZE Apt Elev	N/A N/A 684
--	------------------------	-----------------------------	--

VOR-A
IOWA CITY MUNI (IOW)

⚠ Circling Rwy 12, 30 NA at night. Rwy 12, 30 helicopter visibility reduction below 1 SM NA. When local altimeter setting not received, use CID altimeter setting and increase all MDAs 80 feet.

⚠ MISSED APPROACH: Climbing left turn to 2600 direct IOW VOR/DME and hold.

ASOS 128.075	CEDAR RAPIDS APP CON* 119.7 266.8	CLNC DEL 119.05	UNICOM 122.8 (CTAF) 📻
------------------------	---	---------------------------	--



CATEGORY	A	B	C	D
CIRCLING	1300-1	616 (700-1)		NA

FAF to MAP 7.6 NM					
Knots	60	90	120	150	180
Min:Sec	7:36	5:04	3:48	3:02	2:32

NC-3, 10 JUL 2025 to 07 AUG 2025

NC-3, 10 JUL 2025 to 07 AUG 2025